

Global Strategy
for Plant Conservation

GSPC

The Global Strategy for Plant Conservation
International Plant Conservation Conference, 2025
St. Louis, Missouri Botanical Garden

A banner for the International Plant Conservation Conference. The background is a close-up photograph of purple flowers with green foliage. The text is overlaid on the left side of the image.

International Plant

CONSERVATION CONFERENCE

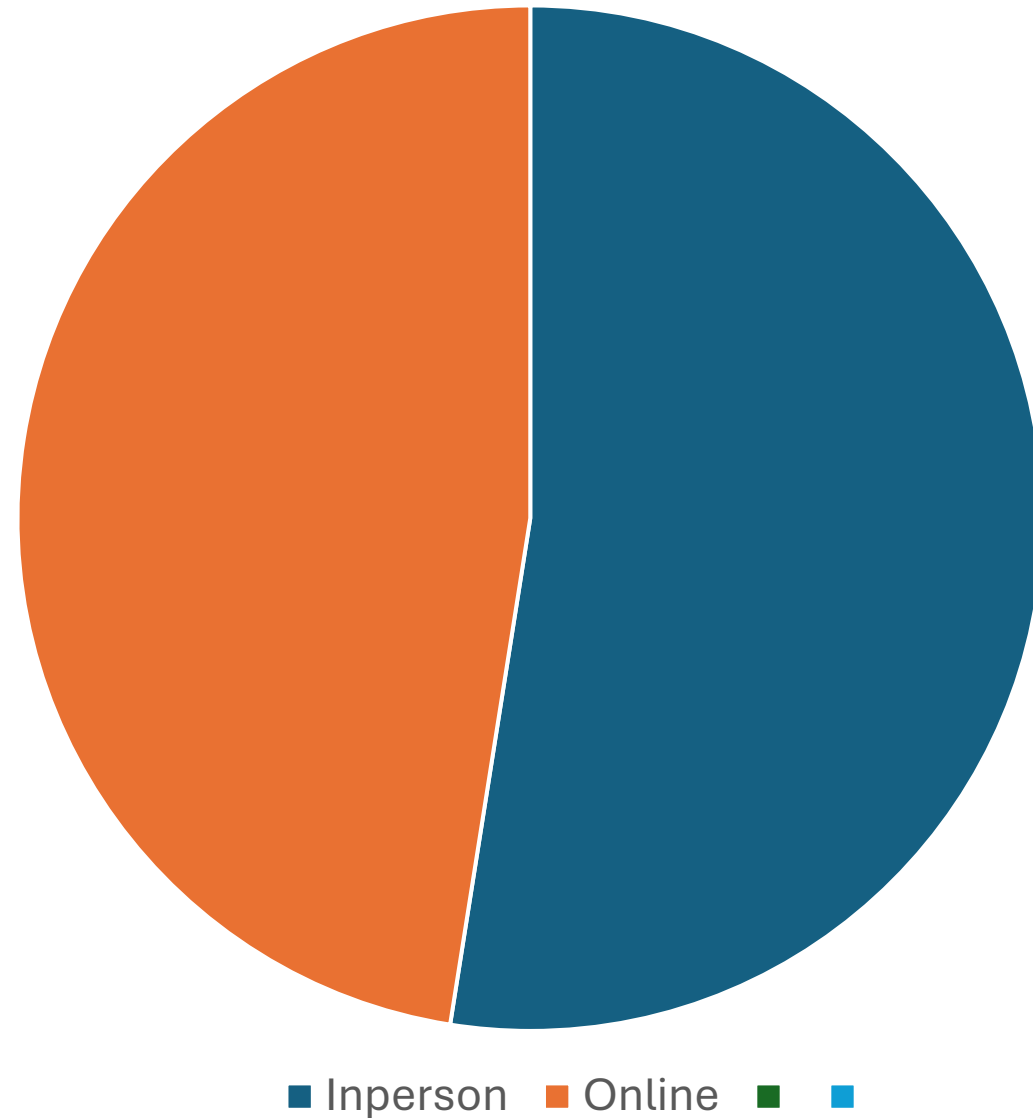
Supporting the worldwide implementation
of the Global Strategy for Plant Conservation

Conference Objectives

- Showcasing examples and sharing experiences on GSPC implementation
- Providing guidance and support for national and regional GSPC implementation entering into the new phase
- Building leadership among the GPPC participating organizations for monitoring and to evaluate progress for the delivery of GSPC actions
- Developing and considering scenarios and new initiatives for the GSPC in the upcoming period
- Providing an opportunity for participants to consider ways they can contribute to national CBD reporting processes and inclusion of plant conservation in updating National Biodiversity Strategies and Action Plans and reviewing their implementation

Overview

- 200 participants total
- 6 key notes addresses
- 8 workshops
- 8 presentation sessions
- 39 speakers
- 1GPPC business meeting
- 2 herbarium tours



Sessions

For the full list of abstracts

[CLICK](#)

Sessions	Workshops
Relating the IUCN Assess-Plan-Act Framework to the GSPC	Data tools and tracking progress for the GSPC
GSPC Action 3: Important Plant Areas	Designing a Monitoring Framework for the Global Strategy for Plant Conservation (GSPC)
Partnerships and collaboration for Plant Conservation (Objectives 2/3)	Developing a Global Strategy for Fungal Conservation
GSPC Action 2 - Restoration and In situ Conservation	Developing a Reporting Framework for Voluntary Complementary Actions under the Global Strategy for Plant Conservation
Implementing the GSPC through botanic garden strategies	Policy Tools and solutions for implementation and mainstreaming
Implementing Action 4 in Ex Situ Collections	Examples of voluntary complementary action projects in urban green infrastructure and urban plant diversity as coordinated by botanical gardens
Implementing the GSPC at different scales	Regional and Technical networks to support the GSPC
Strategies for conservation, with a focus on central and South America and the Caribbean	Learning from Crisis

Summary & History of the GPPC

Summary Update on the Work of the Global Partnership for Plant Conservation (GSPC)

- Last general meeting in Cape Town, South Africa (2018)
- Impact of the pandemic on institutions and organisations
- Delay in the adoption of the global biodiversity framework

Conference Organised by GPPC

- Review of progress on the achievement of the GSPC up to 2020
- Planning for the next GSPC

Convention on Biological Diversity Liaison Group Meeting

- Explanation of the term "liaison group"
- Role of the liaison group in discussing the global strategy for plant conservation
- Inclusion of GPPC representatives

Preparation of Document for Post-2020 Global Biodiversity Framework

- First draft prepared by GPPC
- Review and revision process
- Submission to CBD Secretariat

GPPC's Work and Collaboration

- Support for GSPC by individual members and joint projects
- Role of the secretariat in synthesising information
- Completion of the new plant conservation report (2020)
- Compilation of reports by BGCI

Negotiations with CBD for Third Phase of GSPC

- Advocacy for a third phase within the global biodiversity framework
- Importance of parties' voices in negotiations
- Efforts to get CBD national authorities to speak up

Workshops, Symposia, and Conferences

- Global Botanic Gardens Congress in Singapore (August 2024)
- Tracking development of Global Biodiversity framework targets
- Drafting and revising GSPC documents

Regional Meetings and Contributions

- Sichuan Banner Declaration on Plant Conservation
- World Forum on the GSPC in Dujiangyan, China

COP15 and Development of Complementary Actions

- Invitation to develop complementary actions
- Review and update process
- Submission to CBD Secretariat for peer review

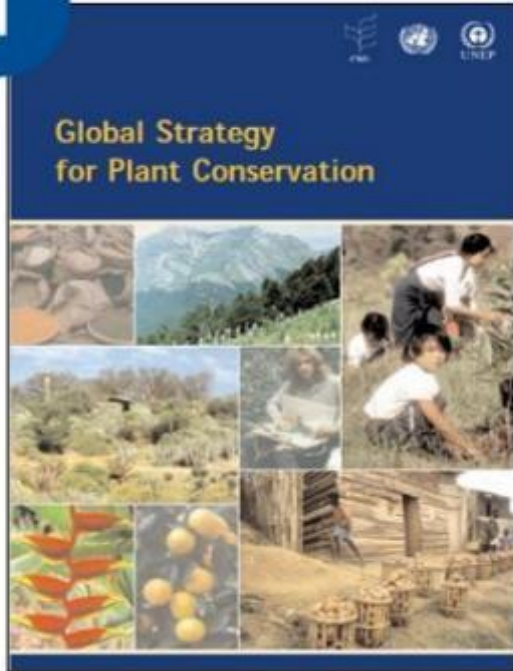
Technical Rationales for Complementary Actions

- Significant paper drafted and presented at SBSTTA 25
- Support and answer questions from parties

Adoption of GSPC at COP16

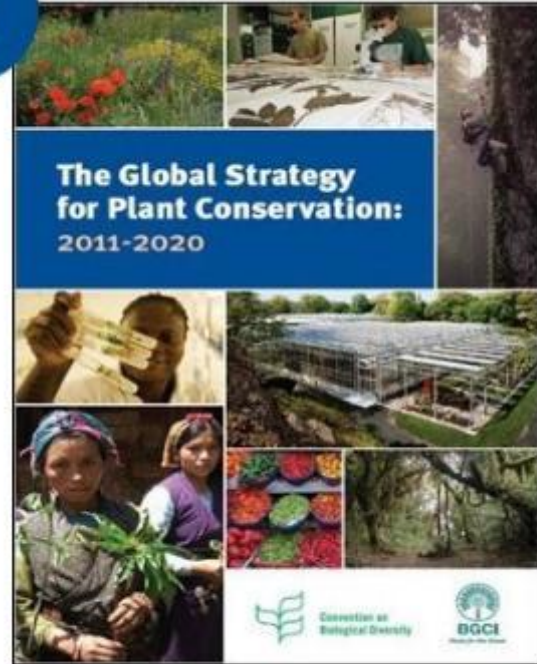
- Continued negotiations and consensus finding
- Final adoption of the GSPC

1



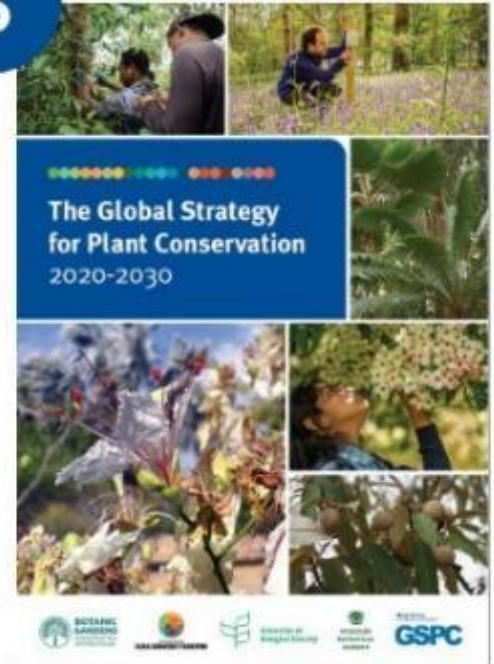
GSPC (2002-2010)

2



GSPC (2011-2020)

3



GSPC (2020-2030)

History and Evolution of the GSPC



Origins and Early Development

- 1999: 16th Botanical Congress (St. Louis) passes resolution for a global plant conservation effort
- Leads to the **Gran Canaria Declaration** and CBD discussions
- 2002: CBD adopts the **Global Strategy for Plant Conservation (GSPC)** with 16 outcome-based targets (2002–2010)

Key Innovations of the First GSPC

- Outcome-based targets**
First international targets specifically for plants
- Five core objectives**
Document • Conserve • Use sustainably
Educate & raise awareness • Build capacity
- Global mobilization**
Inspired national strategies & united the plant conservation community

Progress and Achievements (up to 2020)

- Target 1 achieved**
World Flora Online created – global online flora of all known plant species
- Mixed results on other targets**
Some met, others lagged; progress varied across countries
- Major advances**
Threat Search Database & Global Tree Assessment significantly expanded Red List data

Key Initiatives

- World Flora Online**
 - ~60 institutions collaborating
 - 1.6 million+ plant names
 - ~380,000 accepted species
- Collaborative, in-kind model**
Driven by shared expertise and institutional contributions
- Advancing data, accessibility & global plant knowledge**

Global Partnership for Plant Conservation (GPPC)

- Launched in 2004 to support GSPC implementation
- 60+ member organizations
- Recognized by the CBD as the coordination mechanism for plant-focused targets
- Operates mainly through in-kind contributions

Post-2020 GSPC & the Kunming–Montreal GBF

- Kunming–Montreal Global Biodiversity Framework (GBF)**
Adopted 23 headline targets
- No separate GSPC targets**
Plant actions integrated to complement GBF
- 2022–2023 CBD decisions**
 - GPPC presents Voluntary Complementary Actions
 - CBD accepts the updated GSPC (third update)
 - GPPC to support monitoring & reporting

Importance of Complementary Actions

- Maintain focus on plant-specific priorities
- Add detail & sophistication to GBF implementation
- Address climate change & urban biodiversity
- Avoid duplication while strengthening plant conservation

Looking Ahead

- Urgent, collective action by all stakeholders
- Use the GSPC as a roadmap to achieve GBF goals by 2030
- Build on past successes with optimism & determination



What were the key themes?

- Importance of alignment of gardens strategies with the GSPC
- Important Plant Areas are simple to understand, flexible and can be easily implemented
- Collaboration and partnership are at the core of what we do as conservation practitioners, integrating diverse stakeholder perspectives.
- SANBI is addressing the challenge of biodiversity loss in a hyper-diverse country by mobilising a network of thousands of citizen scientists
- Many collaborative networks are operating to bridge and connect across different scales or sectors
- Engaging and empowering local communities is critical to ongoing support for conservation actions
- Conservation can be dependent on a small number of herbarium records – there is a big knowledge gap and efforts should be made for additional field data collection
- Long term funding is needed to form foundational research (such as IPAS) and for understanding plots, and restoration areas
- The best way to save a plant is to share it with other gardens
- Feedback is very important in making sure tools are as valuable as possible
- Good data means good outputs
- Training is still important across the globe - Working on training seed collectors and creating a network of volunteers, helping them achieve goals



Key themes

Alongside the key activities highlighted by speakers and the examples of progress made, other key themes arose from the sessions and workshops of the conference.

To understand these in the context of the GSPC and the Kunming Montreal Global Biodiversity Framework (KMGBF), below the key themes have been considered in relation to three pillars/objectives of the KMGBF.

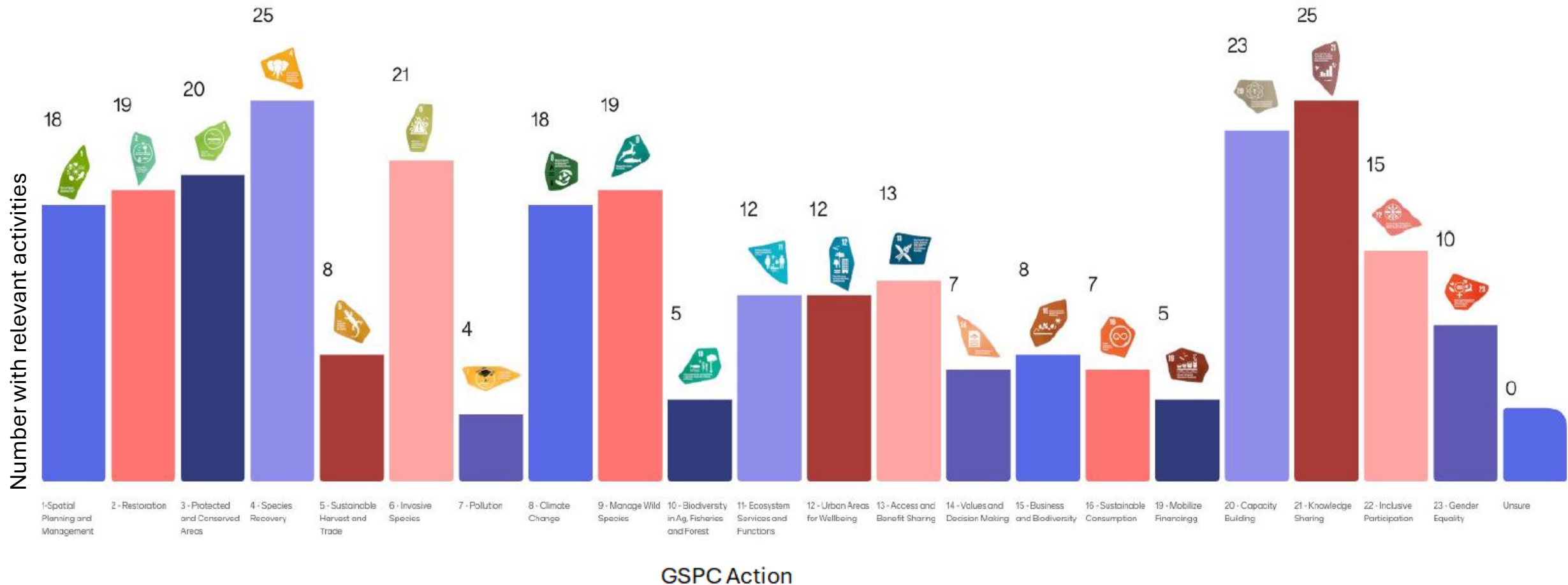
Pillar 1: Reducing Threats to Biodiversity	Pillar 2: Meeting people's needs through sustainable use and benefit sharing	Pillar 3: Tools and solutions for implementation and mainstreaming
Species recovery, ecological restoration, ex situ conservation, genetic diversity, invasive species management, Important Plant Areas (IPAs), climate resilience, alpine and tropical plant conservation, integrating fungi into ecosystem conservation, addressing illegal plant trade.	Community-led conservation, citizen science, Indigenous and local knowledge, sustainable use of plant resources, livelihood generation linked to conservation activities, public engagement and conservation optimism, education and outreach programmes.	Monitoring and reporting frameworks, practical indicators for GSPC implementation, shared databases and data platforms, cross-sector partnerships, policy alignment with GBF/NBSAPs, collaborative networks, capacity building, open-access tools and guidance, improved communication between science, policy, and practice.



Progress on Actions

Interactive sessions during the congress asked how many participants were already taking part in relevant GSPC Actions.

The results show, that despite the GSPC only being adopted in 2024, many of the Actions are relevant to the working of plant conservation organisations and gardens. These efforts exemplify action already being undertaken. They also provide a baseline from which we can galvanise activities, identify where there is already strong implementation and the gaps where more support is needed



Progress on Actions

Presenters were also asked which GSPC Actions their work, and the content of their presentations contributed to. Similarly to the previous figure GSPC Actions 4, 14, 20 and 21 were the most frequent Actions being addressed.

Key activities mentioned by presented were:

- Compiling and making plant conservation resources more widely available.
- Using *ex situ* gap analysis to identify conservation priorities.
- Development of case studies and learning from others to expedite plant conservation activities.
- The importance of genetic diversity in *ex situ* collections.
- Methods for, and an increase in, effective restoration and reintroduction programs for plants.
- Enhance collaboration with local partners.
- Running training courses in a variety of subjects to a variety of audiences e.g. ID courses for forestry staff, local communities on socioeconomic species.
- Improve the protection of plant species in *in situ* areas and identify areas important for plant diversity. To also support the design and implementation of management plans for these sites
- Ensure sustainable safe and legal harvesting and trade of wild species from biodiversity hotspots.
- Engage new audiences and actors in plant conservation.
- Continued promotion and importance of seedbanking.



Indicators

What GSPC actions do you have Indicators for?
e.g., Action 4 IUCN Red List

Question	Do you want to stay involved with working on indicators for the GSPC?
Respondents	39
Choices	Votes
Yes! I love indicators	30
No	0
Maybe?	13

38 Respondents

Choices	Votes
1-Spatial Planning and Management	11
2 - Restoration	19
3 - Protected and Conserved Areas	17
4 - Species Recovery	26
5 - Sustainable Harvest and Trade	5
6 - Invasive Species	17
7 - Pollution	0
8 - Climate Change	5
9 - Manage Wild Species	8
10 - Biodiversity in Ag, Fisheries and Forest	1
11- Ecosystem Services and Functions	8
12 - Urban Areas for Wellbeing	4
13 - Access and Benefit Sharing	3
14 - Values and Decision Making	1
15 - Business and Biodiversity	3
16 - Sustainable Consumption	2
19 - Mobilise Financing	1
20 - Capacity Building	19
21 - Knowledge Sharing	24
22 - Inclusive Participation	7
23 - Gender Equality	6
Unsure	9

Red Sudamericana de Jardines Botánicos

- Founded in 2019, Ibagué, Colombia
- Statutes developed and approved for the functioning of the network
- Working plan for the network reviewed every year
- MoU signed in 2023 with Bogotá Botanic Garden, Colombia to support the consolidation of the network

RSAJB

Ecological restoration

ACTION 2: Implement or participate in programmes for the **effective restoration** of degraded ecosystems and habitats, including to prevent or mitigate the existing drivers of degradation, **prioritizing the use of genetically appropriate material of native species**, enhancing and conserving soils, considering ecological criteria, associated fungal symbionts, pollinators and dispersers, and including species of conservation concern, as well as climate resilience, long-term commitment, innovative financing and adaptive management, ensuring that the programmes enhance biodiversity and human well-being and are informed, where possible, by traditional knowledge, with the free, prior and informed consent of the indigenous peoples.

EBGC

- **Goal:** All restoration projects include genetically appropriate native taxa.
 - **Indicator:** Number of botanic gardens participating in restoration activities.
 - Reporting via GardenSearch.
 - **Indicator:** Number of taxa native to Europe used in restoration projects.
 - Reporting via GardenSearch.

The Global Biodiversity Standard

RESTORE

Progress

Across the rest of the conference, further highlights and statements of progress for plant conservation were considered. Including:

- The GSPC promoting a whole-society approach to plant conservation
- 2,000 key biodiversity areas (KBAs) triggered by plant species
- Plant assessments now nearing 50% of species on the IUCN red list.
- Conservation actions being undertaken at a species, genus, family level and a site, country, regional level
- Tropical IPAS (TIPAs) 9 countries 200+ sites, ~200 TIP publications to date.
- We now have the foundations for conservation action plans for several key tree species (Magnolia, Oaks, Country level)
- Growing regional networks which focus on developing skills and sharing knowledge e.g. Caribbean and Central American Botanic Garden network has doubled in size since 2022

Since the conference in March 2025, there will already be other areas of success in our community.



Existing tools to support implementation

As well as many actions being in place to support conservation many databases, data sets and methodologies exist and are well utilised in plant conservation efforts. The curation of these is important and requires continued recognition. Data sharing is also essential for the protection of plant diversity, it can reduce duplication, maximise limited resources and allow collaborative projects to thrive. For the GSPC, the foundations of these databases will support implementation and reporting, and many will act as indicators and monitoring tools.

- BGCIs Database
 - PlantSearch GSPC actions 2, 4a, 11, 21c
 - ThreatSearch GSPC actions 4a, 4c
 - GardenSearch GSPC actions 2, 4a, 4c, 9
 - Globaltree Portal actions 4b, 4c, 4e, 4f
- IPA and KBA Databases and their relevant methodologies for identifying areas of plant diversity
- World Flora Online to support taxonomic studies
- The IUCN Red List of Threatened Species, and other IUCN databases
- The Scottish Plant Biodiversity Strategy and their genetic scorecards
- GENSCOP – platform designed to link authorities, practitioners and scientist working in conservation geneticists



Data capture feedback



Technical Networks



GLOBAL TREES

Action for all tree species



GTA

Global Tree Assessment



GCC

Global Conservation Consortia



ERA

Ecological Restoration Alliance of Botanic Gardens



The Global Biodiversity Standard



IPSN

International Plant Sentinel Network

Regional Networks



ABGN

African Botanic Gardens Network



CCABG

Caribbean and Central American Botanic Gardens Network



EBGC

European Botanic Gardens Consortium



RSAJB

Red Sudamericana de Jardines Botánicos

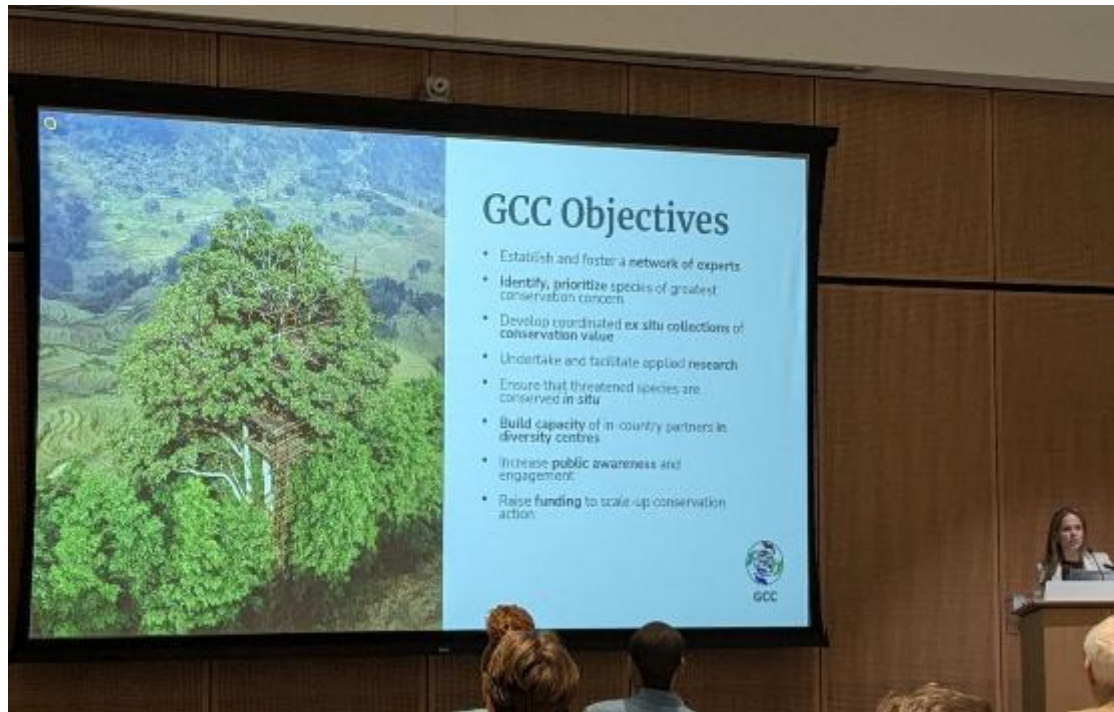


SEABG

Southeast Asia Botanic Gardens Network


Networks contribute across all targets, and the Collaboration of networks is going to be key to the success of all GSPC Actions

It is important to note there are also non BGCI networks contributing to the GSPC - IUCN SSC Specialist Groups; CITES working groups; World Flora Online; Taxonomic groups; other groups within the CBD



GCC Objectives

- Establish and foster a network of experts
- Identify, prioritize species of greatest conservation concern
- Develop coordinated ex situ collections of conservation value
- Undertake and facilitate applied research
- Ensure that threatened species are conserved in situ
- Build capacity of in-country partners in diversity centres
- Increase public awareness and engagement
- Raise funding to scale-up conservation action





EBGC – Plant conservation Action Plan 2025 – 2030
Prepared in 2024

 **Plant Conservation Action Plan (2025-2030)**
European Botanic Gardens Confederation (EBGC)
18/04/24 - November 2024

EBGC priority goals and indicators

Priority Goal	Indicator
Goal 1: Increase the number of species in ex situ collections of conservation value	Number of species in ex situ collections of conservation value
Goal 2: Increase the number of species in situ	Number of species in situ
Goal 3: Increase the number of species in situ	Number of species in situ
Goal 4: Increase the number of species in situ	Number of species in situ
Goal 5: Increase the number of species in situ	Number of species in situ
Goal 6: Increase the number of species in situ	Number of species in situ
Goal 7: Increase the number of species in situ	Number of species in situ
Goal 8: Increase the number of species in situ	Number of species in situ
Goal 9: Increase the number of species in situ	Number of species in situ
Goal 10: Increase the number of species in situ	Number of species in situ

Units have for the high priority

Units have for the lowest priority



Conservation optimism

- Constant negative biodiversity headlines can fuel **eco-anxiety**, reducing public engagement and discouraging conservation careers.
- While biodiversity loss must be addressed honestly, **Conservation Optimism** promotes realistic, hopeful narratives that highlight conservation successes and inspire action.
- Evidence shows conservation works: habitat restoration, invasive species control, protected areas, and sustainable management can significantly improve biodiversity outcomes.
- **Global progress:** Nearly 50% of species on the IUCN Red List are now plants, with over 47,000 tree species assessed through the Global Tree Assessment.
- Growing participation from plant and fungal experts worldwide is strengthening conservation action and collaboration.
- Young conservationists from countries including Fiji, India, the Philippines, and Wales are helping drive optimism and engagement in plant conservation.

Importance of the New GSPC

- The updated GSPC provides an optimistic roadmap for plant conservation aligned with global biodiversity goals.
- Emphasises sharing success stories and scaling site-based conservation approaches such as Important Plant Areas (IPAs) and Key Biodiversity Areas (KBAs).

Botanic Garden Actions, Goals and Indicators developed



- In 2023 BGCI's International Advisory Council developed goals & indicators for the botanic community
- Indicators were aligned with the CBD compulsory and voluntary indicators but lacking in detail for plants
- Goals & indicators reviewed by policy experts in the botanic community
- Many gardens are now incorporating them into their strategies following adoption of the GSPC Actions at COP16



Cultivating hope in conservation



Rachel Hoffmann, Head of Global

Plantlife The global voice for wild plants and fungi

Objective 1 – Reducing threats to biodiversity

- Strong focus on species recovery and ecological restoration, with practical examples ranging from Tropical Important Plant Areas (TIPAs) in Guinea to alpine plant conservation strategies in North America.
- Expansion of ex situ conservation approaches, including seed banking networks in Australia and Hawai'i, cryopreservation for exceptional species, and coordinated living collections linked directly to species recovery.
- Increasing recognition of genetic diversity as a critical but often overlooked component of conservation planning, monitoring, and restoration.
- Growing use of Important Plant Areas (IPAs) and regional conservation planning approaches to identify and safeguard priority areas for threatened plants.
- Discussions highlighted the importance of integrating fungi into wider ecosystem conservation and restoration efforts, particularly following momentum generated at CBD COP16.
- Continued concern around habitat loss, invasive species, climate change, illegal plant trade, and major knowledge gaps for unassessed species and underrepresented regions.
- Several sessions stressed that inaction can itself become a conservation risk, particularly as biodiversity loss accelerates faster than traditional conservation processes can respond.



Objective 2 – promoting sustainable use and equitable benefit sharing

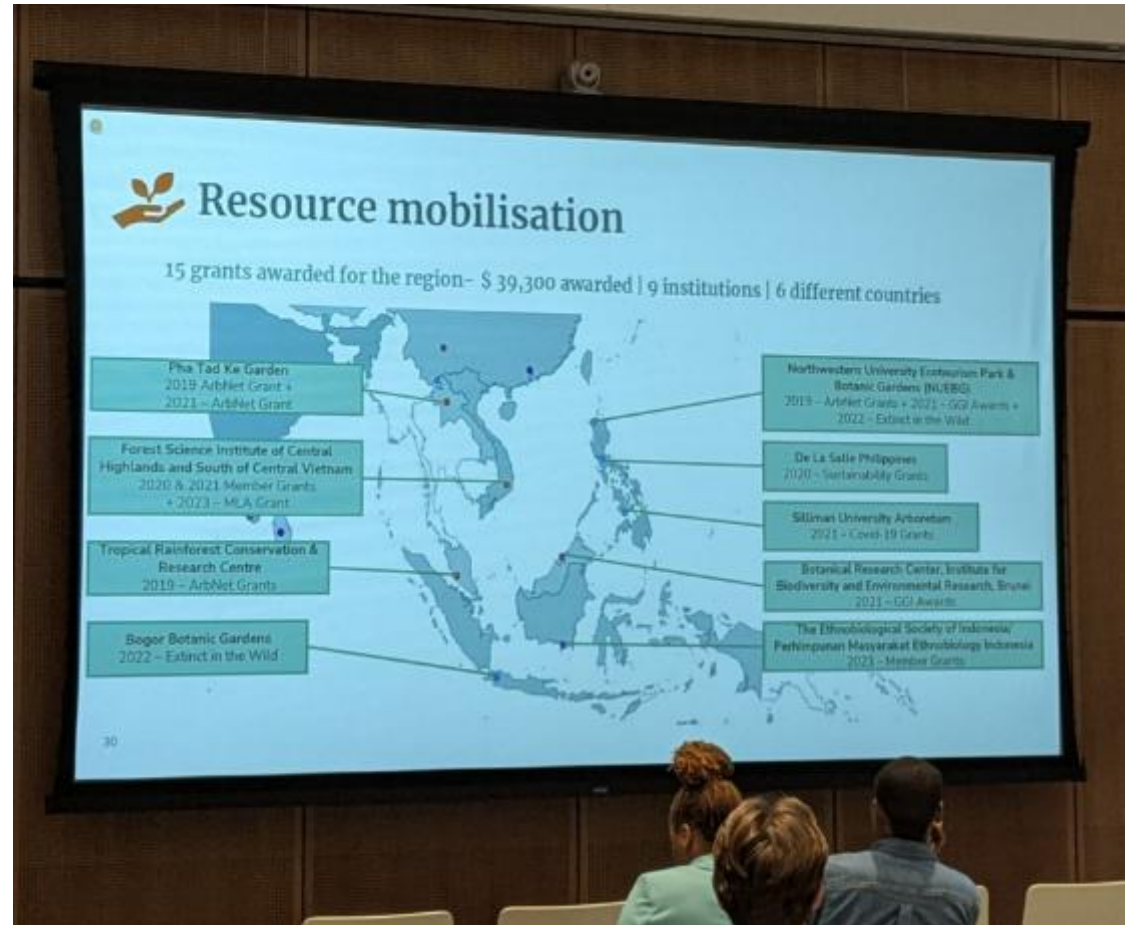
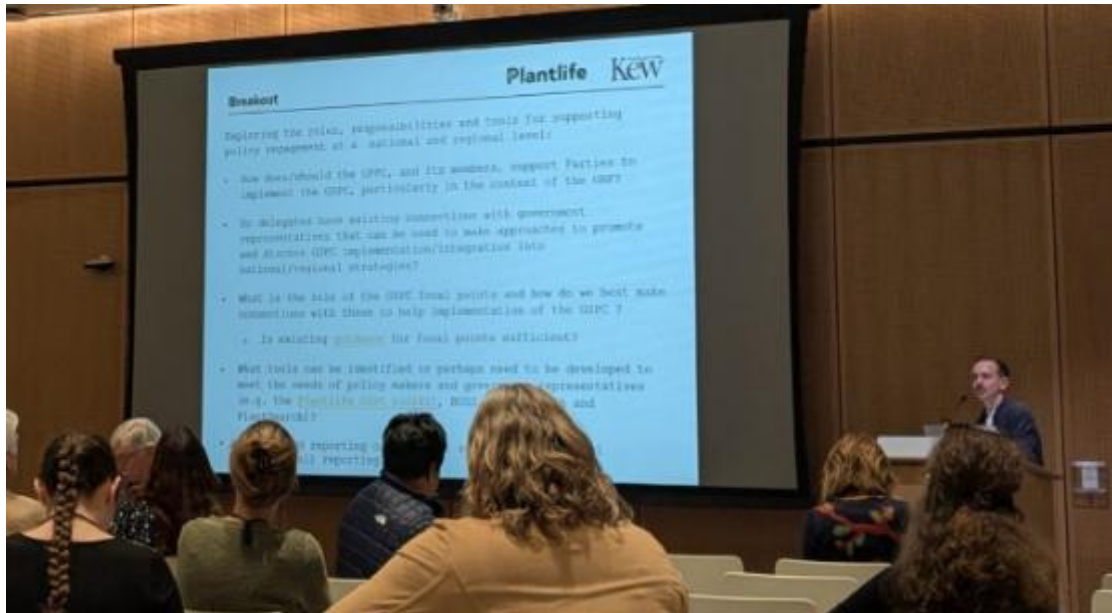


- Strong emphasis on community-led conservation approaches, particularly examples from Guinea where local nurseries and restoration activities also gave income opportunities to communities protecting threatened species.
- Citizen science appeared repeatedly as a powerful tool for conservation, with examples including South Africa's CREW programme, UK national plant monitoring schemes, and iNaturalist data supporting Red List assessments and biodiversity planning.
- Recognition that Indigenous and local knowledge needs to play a much larger role in conservation implementation and long-term stewardship.
- Education and outreach initiatives, such as Biodiversity Days and public-facing conservation campaigns, highlighted the importance of building conservation optimism and increasing public engagement with plant conservation.
- Discussions around sustainable use included medicinal plants, culturally significant species, and the importance of balancing conservation with local livelihoods and equitable participation.
- Several speakers highlighted the importance of making conservation more accessible, collaborative, and relevant to broader society, rather than remaining siloed within scientific institutions.

Objective 3 – Strengthening implementation and mainstreaming mechanisms

- Strong focus on developing practical monitoring and reporting frameworks for the GSPC, with repeated calls for indicators that are scientifically robust but also realistic and usable for policymakers and practitioners.
- Useful examples shared included activity mapping exercises in botanic gardens, genetic diversity indicators, restoration metrics, and European-wide approaches aligning botanic garden activities with GSPC actions.
- Shared databases, online platforms, and open-access tools were repeatedly highlighted as essential for scaling implementation and improving collaboration across institutions and countries.
- Partnerships and collaborative networks were one of the strongest recurring themes across the conference, from regional conservation alliances in the U.S. to international seed banking and IPA partnerships.
- Repeated discussions highlighted the need to break down silos between science, horticulture, policy, education, and conservation practice to improve implementation outcomes.
- Ongoing challenges included limited funding, short-term project cycles, inconsistent monitoring approaches, and difficulties translating scientific knowledge into policy and practical conservation action.
- Strong appetite for continued collaboration, knowledge sharing, training, and improved alignment between GSPC implementation, national biodiversity strategies, and the Global Biodiversity Framework.





National Red Lists – lessons learned from Global Tree Assessment for Target 4



- There are still huge gaps when it comes to knowledge of the conservation status of plants
- National red list assessments are vital for setting national targets, raising awareness and taking action nationally
- The Global Tree Assessment has collaborated with countries across the world to assess or transfer existing national assessments for endemic species, or used existing national data for non-endemic assessments

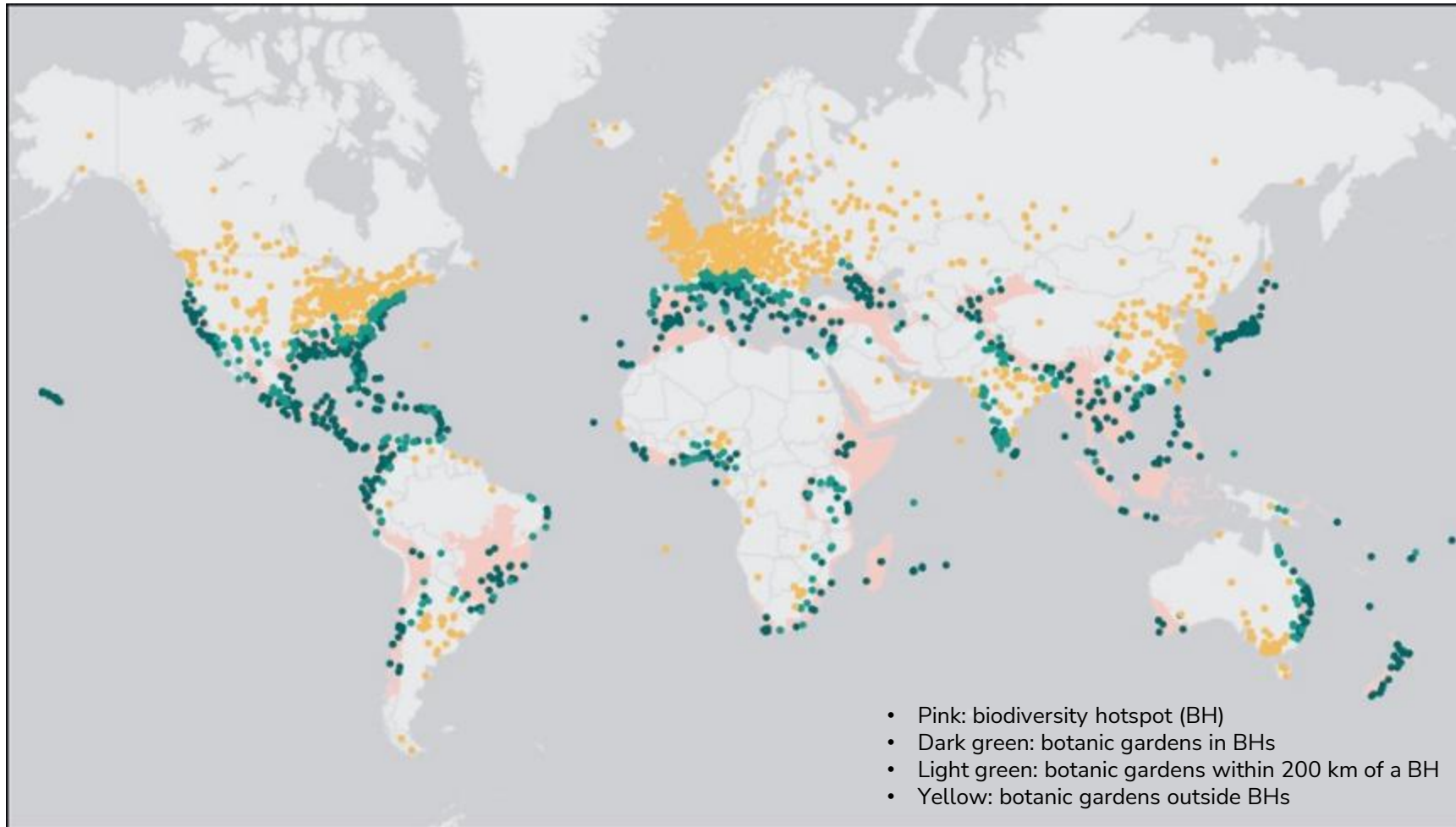
Policy -Key takeaways



- **Simplifying Information:** There is a need for clearer, simpler language and FAQs to make complex policy documents, like those from the CBD, more accessible. The current texts are often difficult for non-experts to engage with.
- **Lack of a Glossary:** The CBD has never had an official glossary of terms, which makes understanding the language used in documents challenging for those outside the policy world.
- **Need for Policy Expertise:** Many people in the plant conservation community have learned policy on the job, and there's a need to bring in people with formal policy training, possibly by collaborating with universities offering policy programs.
- **Sharing Job Descriptions:** There's a need to share job descriptions or career paths related to policy work in plant conservation to help institutions better understand how to grow these roles.
- **University Collaborations:** Universities could be a valuable source of policy expertise. Graduate students in policy programs might be interested in working on plant conservation issues as semester projects, which could help bring fresh expertise to the field.
- **Training Resources:** Simple handbooks and training courses ahead of COP meetings to help people understand complex agendas.
- **Learning from Existing Networks:** Networks like the University Policy Exchange Network in the UK, which focuses on bridging academic research and policy, could offer models for how to better share expertise and knowledge between universities and the wider policy community.

The global botanic garden community

3,500 institutions • 30% known plants • 60,000 technical experts • 1 billion visitors



GSPC & Botanic garden strategies

- Strong **focus** on using the GSPC as an internal framework to help guide botanic garden activities, priorities, and resource allocation.
- Growing **recognition** that plants need greater visibility within national biodiversity strategies and monitoring frameworks.
- **Importance** of whole-of-society approaches, partnerships, citizen science, and national coordination.
- Increased focus on **monitoring**, metrics, indicators, and bringing genetic diversity more into conservation planning.
- Ongoing **challenges** around indirect impacts, knowledge gaps, unassessed species, funding limitations, and linking science to policy and practice.
- Clear **need** for stronger monitoring and reporting frameworks linked to GSPC actions.
- Good **examples** of plants being embedded into national strategies and aligning targets/actions with local priorities.
- **Citizen science** and national monitoring schemes highlighted as valuable long-term data collection and reporting.
- **Genetic diversity** increasingly recognised as an important gap.
- Continued **development** of governance structures, monitoring systems, and delivery mechanisms.



The Photo by PhotoAuthor is licensed under CC BY

Reflections

- Several strong examples showed how the GSPC can help strategically guide institutional and national conservation work.
- Particularly useful ideas around activity mapping, metrics, and monitoring frameworks

Implementing Action 4 in Ex Situ Collections

Key Themes & Insights

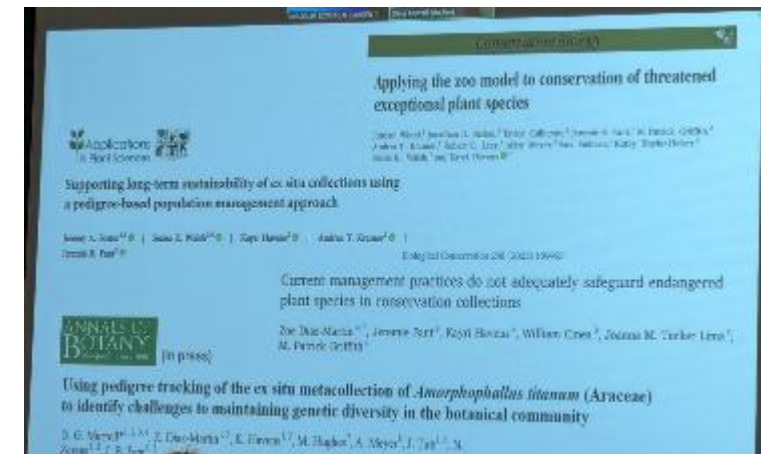
- Strong emphasis on collaboration and networks as essential for successful ex situ plant conservation.
- Good examples shared of national and regional seed banking networks, living collections, cryopreservation programmes, and coordinated conservation initiatives.
- Funding was repeatedly highlighted as a major factor influencing the scale and impact of ex situ conservation work.
- Shared databases, knowledge exchange, and open-access resources were seen as critical for improving coordination and efficiency.
- Increasing focus on cryopreservation as an important tool for conserving exceptional species that cannot be traditionally seed banked.
- Strong reminder that ex situ conservation should ultimately support species recovery and reintroduction back into the wild.

Practical Implications for GSPC

- Useful models and approaches shared that could support wider implementation of GSPC Action 4.
- Demonstrated the value of coordinated networks, shared standards, and better collection management.
- Highlighted the importance of strong record-keeping, data sharing, and linking living collections more directly to conservation outcomes.
- Open-access tools and shared protocols could help strengthen monitoring, reporting, and implementation across institutions.

Reflections

- Really useful examples of how collaboration can significantly scale up ex situ conservation efforts.
- Strong takeaway around the importance of treating living collections as active conservation tools rather than simply horticultural displays.
- Good reminder that long-term funding and coordination remain key challenges for sustained implementation.



Partnerships & Collaboration for Plant Conservation

Regional Botanic Gardens Networks



ABGN
African Botanic
Gardens Network



CCABG
Caribbean and Central American
Botanic Gardens Network



EBGC
European Botanic
Gardens Consortium



RSABJ
Red Sudamericana
de Jardines Botánicos



SEABG
Southeast Asia
Botanic Gardens Network

Key Themes & Insights

- Strong discussions around balancing conservation caution with the urgent need to act, particularly in areas like assisted migration, restoration, and species recovery.
- Repeated calls for better collaboration between scientists, horticulturists, conservation practitioners, policymakers, and the public.
- Citizen science highlighted as hugely valuable for filling plant data gaps, supporting Red List assessments, and improving monitoring.
- Regional and national conservation alliances continue to play an important role in coordinating conservation priorities, data sharing, and species recovery.
- Climate change, illegal plant trade, habitat loss, and lack of data continue to drive urgency across plant conservation work.
- Greater focus on integrating cultural values, local communities, and Indigenous partnerships into conservation planning.

Practical Implications for GSPC

- Strong examples of how partnerships and collaborative networks can support delivery of GSPC objectives and complementary actions.
- Citizen science platforms and shared datasets are becoming increasingly important for monitoring, reporting, and informing conservation planning.
- Ex situ gap analyses, restoration prioritisation tools, and regional conservation strategies provide useful approaches that could be adapted elsewhere.
- Highlighted the importance of breaking down silos within institutions and improving communication across sectors.

Reflections

- Really interesting discussions around the risks of inaction versus imperfect action in conservation.
- Citizen science examples were particularly impressive and showed the huge value of public engagement in plant conservation.
- Strong reminder that collaboration, transparency, and practical implementation are just as important as scientific knowledge.



2050 Biodiversity Days Impact Plan In Development


Objectives	Indicators for Biodiversity Days	GBF-GSPC
<p>Raise awareness of biodiversity and its importance to human and ecological health</p>	<p>Participation Trends</p> <ul style="list-style-type: none"> Total number of participants per year (in-person vs online) Growth in audience over time and types of audiences reached <p>Learning Hours</p> <ul style="list-style-type: none"> Total number of hours individuals spend learning <p>Impact of Delivery Mode</p> <p>Thematic Analysis</p> <ul style="list-style-type: none"> Annual themes – trends and change over time 	<p>Target 10 – Action 10 A Develop and support education programs on the importance of plants</p> <p>Target 21 – Action 21 A Public authorities promote or take measures of the role of forest diversity and ecosystem services</p>
<p>Mobilize local and global action to stop the loss of biodiversity</p>	<p>Sustained Financing for Biodiversity Days</p> <ul style="list-style-type: none"> Funds raised, variety and number of financing sources <p>Partner & Collaboration Insights</p> <ul style="list-style-type: none"> Most active partners with new vs returning partners <p>Event Popularity and Actions Promoted</p> <ul style="list-style-type: none"> Total number of events and actions promoted Post-event responses about take-away actions 	<p>Target 12 – Action 12 B Urban Plant Diversity</p> <p>Target 19 – Action 19C Provide interactive digital tools to assess the potential benefits of agroecological practices in the field</p> <p>Target 19 – Action 19 Support and facilitate measures that a wide range of appropriate practices to carry out plant conservation action</p>
<p>Build a generation of stewards, scientists and citizens that actively protect and restore biodiversity</p>	<p>Student and Youth Leadership Insights</p> <ul style="list-style-type: none"> Annual student and youth engagement <p>Community/Citizen Science Insights</p> <ul style="list-style-type: none"> Annual participation in community science 	<p>Target 20 – Action 20 A Car and strengthen institutional leading and capacity building related to plant conservation</p> <p>Target 21 – Action 21 E Climate Science – develop or support related capacity building</p>

Monitor genetic diversity at large scale

To help prioritize places for intervention, and to track improvement or decline, genetic monitoring and reporting is needed for many species

Monitor quickly, affordably, inclusively, at scale (400K plant species)

Ideally, so decision makers can understand



Laikre et al 2020, Laikre et al 2020, Laikre et al 2021, Laikre et al 2021, O'Brien et al 2022, Hoban et al 2022, Mastretta-Yanes & da Silva et al 2022

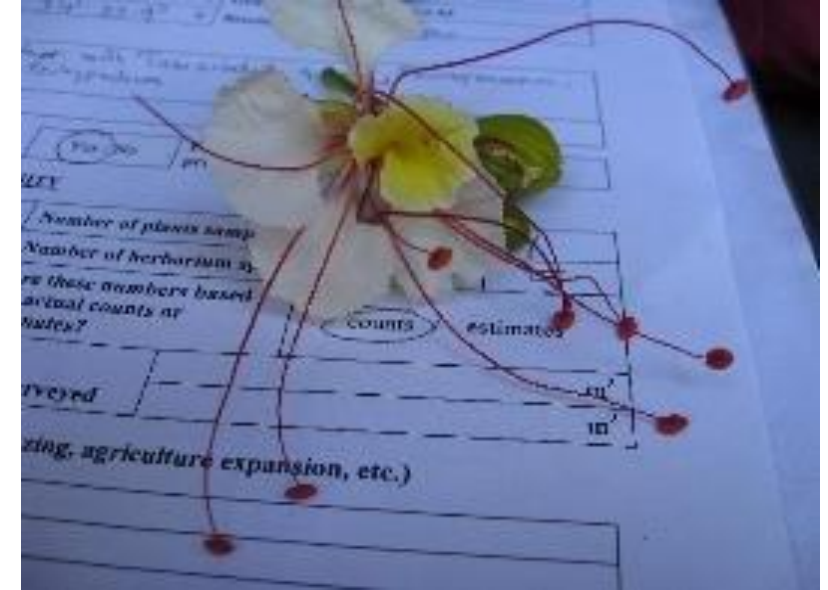
Monitoring framework for the GSPC

Key Themes & Insights

- Strong focus on the need for practical, measurable indicators to support implementation, monitoring, and reporting of the new GSPC.
- Repeated emphasis on balancing scientific robustness with indicators that are realistic, scalable, and easy for policymakers and practitioners to use.
- Genetic diversity emerged as a major area of focus, particularly around population size, population loss, and safeguarding genetic variation over time.
- Good examples shared of using education, outreach, restoration, invasive species work, and species recovery as measurable indicators linked to GSPC actions.
- Recognition that some areas, particularly pollution and inclusive participation, remain difficult to measure consistently.
- Strong interest from participants in continued collaboration, shared tools, and exchanging practical examples and case studies.

Practical Implications for GSPC

- Indicators can help not only with reporting, but also prioritisation, planning, and guiding conservation action.
- Existing BGCI tools and shared reporting platforms could help streamline monitoring and reduce duplication of effort.
- Greater alignment between local indicators and national/global biodiversity frameworks would strengthen the visibility of plant conservation in reporting processes.
- Need to move beyond simple participation numbers when measuring outreach and education impacts, focusing more on meaningful engagement and long-term behaviour change.
- Historical datasets, gap analyses, and long-term monitoring approaches could provide valuable insights into trends and conservation effectiveness.



Reflections

- Useful reminder that indicators need to be practical and usable, not just scientifically ideal.
- Particularly interesting discussions around measuring the quality of engagement rather than relying only on attendance or social media metrics.
- Strong sense that collaboration and shared tools will be essential for making GSPC monitoring more effective and less fragmented globally.

Global Strategy for Fungal Conservation



Reflections

- Really positive to see growing recognition of fungi within wider biodiversity discussions.
- Interesting discussions around how fungal conservation structures differ quite significantly from the plant conservation community.
- Strong sense that integrating fungal conservation more closely with plant conservation could create much more holistic conservation outcomes.

Key Themes & Insights

- Strong support for developing a Global Strategy for Fungal Conservation aligned with the GBF and complementary to the GSPC.
- Clear recognition that fungi need greater visibility within global biodiversity and conservation discussions.
- Interesting discussions around the differences between the plant and fungal conservation sectors, particularly the lack of an equivalent coordinating body/network structure for fungi.
- Strong emphasis on the interconnectedness of plants and fungi, and the need for closer collaboration between both conservation communities.
- Importance of maintaining current momentum around fungal conservation following the Fungal Conservation Pledge introduced at COP16.

Practical Implications for GSPC

- Important reminder that fungi play a critical role in ecosystem functioning and should be more strongly considered within GSPC implementation, particularly around restoration and area-based conservation.
- Need to ensure alignment between fungal conservation efforts, the GBF, and the GSPC to avoid creating additional reporting burdens for Parties.
- Greater integration of fungal considerations could strengthen restoration outcomes and ecosystem resilience.



GSPC Actions 2020-2030

- Spatial Planning **1**
- Ecological restoration **2**
- Important areas for Plant Diversity **3**
- Plant Species Conservation **4**
- Sustainable Harvest & Trade **5**
- Monitoring Invasive Species **6**
- Impact of Pollution **7**
- Native Plants & Climate **8**
- Plants for People's Needs **9**
- Sustainable Land Management **10**
- Ecosystem Functions & Services **11**
- Urban Green Infrastructure **12**
- Access & Benefit Sharing **13**
- Mainstreaming Tools **14**
- Sustainable Practices **15**
- Sustainable Consumption **16**
- Financial Resources **19**
- Capacity Building **20**
- Public Awareness **21**
- Traditional Knowledge **22**
- Gender Equality **23**

GSPC Targets 2010-2020

- 1** Objective I: Plant diversity is well understood, documented and recognised
- 2**
- 3**
- 4**
- 5** Objective II: Plant diversity is urgently and effectively conserved
- 6**
- 7**
- 8**
- 9**
- 10**
- 11** Objective III: Plant diversity is used in a sustainable and equitable manner
- 12**
- 13**
- 14** Objective IV: Education and awareness about plant diversity
- 15** Objective V: The capacities and public engagement necessary to implement the Strategy have been developed
- 16**

● No equivalent 2011-2020 GSPC target

Questions & Discussions across sessions

- How can IPAs and KBAs better complement each other without creating duplication or competition?
- How can countries with existing large protected area networks integrate GSPC and IPA approaches effectively?
- How do we better measure indirect conservation impacts and long-term outcomes?
- What are the best ways to develop practical, scalable indicators for GSPC monitoring and reporting?
- How can local data and conservation actions better feed into national biodiversity reporting processes?
- How do we measure meaningful engagement and behaviour change beyond simple attendance or social media metrics?
- How can genetic diversity be more effectively integrated into conservation planning, monitoring, and restoration?
- How do we address major knowledge gaps, particularly around unassessed species, current population status, and underrepresented regions?
- How can conservation practitioners balance precaution with the urgent need to act under biodiversity crisis conditions?
- How do we improve communication and collaboration between scientists, horticulturists, policymakers, and local communities?
- What are the best ways to strengthen collaboration between plant and fungal conservation communities?
- How can citizen science data be better integrated into conservation planning, monitoring, and Red List assessments?
- How do we secure long-term funding and government support for sustained conservation implementation?
- How can conservation initiatives create stronger local livelihood and revenue opportunities to support long-term stewardship?
- How do we avoid increasing reporting burdens on Parties while still improving implementation and accountability?
- How to address the challenge of scaling up this work when area growers do not have enough plants, particularly in the recovery of a natural disaster?



Session action points

- Make connections with in-country GSPC focal points, or methods needed to establish GSPC focal points
- We must ensure transparency and open communication about our work to maintain and enhance the trust of the public and other sector stakeholders.
- Communicate between departments within our gardens to break down siloes and challenge assumptions
- Create consistent and compelling narratives about our work
- We need to ensure that the information and knowledge are easily applied to real world plant conservation challenges and uphold public gardens as knowledge hubs
- Outreach to the public needs to be enhanced
- We need to act to harness local community knowledge
- Creation of an online e platform for information and data on IPA's, GSPC Reporting
- Exploration of finance options and stronger collaboration between institutions, practitioners, and scientists
- Sharing of indicators, methodologies, and case studies seen as a major priority.
- Strong appetite for further training and guidance around indicator development, data collection, and reporting approaches.
- Calls for increased collaboration between plant and fungal conservation communities.



Gaps & opportunities

Although much progress has been made, and there are many examples of good conservation action, gaps still exist alongside opportunities for betterment. Some issues were identified across several sessions and overlap with the key themes of the conference.

- Greater consideration and inclusion of genetic data during conservation activities
- Ensuring there is a link between *ex situ* collections of plants and *in situ* activities (reintroductions, population reinforcement etc.).
- There is a policy skills gap in the plant conservation community.
- How do we tackle GSPC Action 7: Impact of Pollution
- Build on existing databases, data sets and internal organisation monitoring to support reporting.
- Conservation can be dependent on a small number of herbarium records – there is a big knowledge gap, and efforts should be made for additional field data collection
- Defining stakeholders who can support and bring knowledge to the different aspects and needs of plant conservation. Also improving integration and communication with these sectors, to improve funding for plant conservation. Stakeholders to consider include:
 - Nurseries
 - Green industries
 - Universities
 - Governments
 - CBD and NBSAP focal points
- Funding remains a major gap



Finance –Opportunities & Challenges

- In general funding is inconsistent and short-term, stifling progress in affected areas
- Large funding gaps remain a major challenge, particularly for species recovery and restoration implementation
- Many US gardens have had success with IMLS funding
- Partnering with (and potentially funding from) green industry and nurseries
- Engage with philanthropic donors such as Fondation Franklinia for Trees
- Several sessions highlighted the importance of funding to support ex situ work, and demonstrated a substantial increase in work after a large funding award
- Government support was repeatedly highlighted as critical for sustained success and access to national data
- Importance of creating revenue-generating opportunities for local communities
- Continued interest in expanding regional collaborations, shared databases, and global specialist networks to overcome funding challenges



Closing Reflections

Use GSPC to plan strategies and activities

Threats still outpace conservation action

The best way to save a plant is to share it with other gardens

Identify gaps and strategies the best way to fill these

Good data means good outputs

The ultimate goal of living collections and *ex situ* conservation should always be the ability to return plants to the wild.

Build and understand existing data capture, to enhance GSPC reporting



What Next?

- Use the GSPC summary document to support work on the GSPC and identify areas of alignment
- Map existing strategies to the GSPC Actions to support future reporting needs
- Become a member of the Global Partnership for Plant Conservation
- GPPC members can sign up to Action Teams (aka working groups) when advertised. Please email policy@bgci.org to join the teams listed below
 - Action Team: Indicators, Monitoring and Reporting
 - Action Team: Communications and Advocacy

<https://www.bgci.org/wp/wp-content/uploads/2025/06/GSPCSummaryRed.pdf>



Please use this QR code to sign up to the new GSPC mailing list.



The screenshot shows the Botanic Gardens Conservation International website. At the top left is the logo for Botanic Gardens Conservation International. To its right are navigation links: MEMBERSHIP, MEMBER BENEFITS, GLOBAL CONSERVATION CONSORTIA, REGIONAL NETWORKS, and TECHNICAL NETWORKS. Below the navigation is a link that says "BACK TO TECHNICAL NETWORKS". The main content area features the text "Global Strategy for Plant Conservation" above the large blue letters "GSPC". To the right of the text is a 2x2 grid of four images: a close-up of colorful flowers, a greenhouse with rows of plants, a person working in a field, and a group of people sitting on the ground. At the bottom of the banner is a green bar with the text "You're missing out on everything this network has to offer." and a white button that says "JOIN NOW".



Be kept up to date with work of the GSPC, GSPC Documents, working groups and much more

Global Strategy
for Plant Conservation

GSPC

