

# IPSN NEWSLETTER



## IPSN

International Plant  
Sentinel Network

»» September 2024 ««



## TOP NEWS!

New  
BGjournal  
issue  
available  
now

The latest issue of BGjournal, Vol 21 No 2 is now available to download.

This issue focuses on Plant Health and Biosecurity. It features 13 articles showcasing the efforts of Botanic Gardens and Arboreta worldwide to enhance biosecurity practices, monitor pests and diseases, educate on plant health, and foster collaboration.

Amongst the featured content there is an introduction to the IPSN by our colleagues from Fera Ltd, a focused article on the Botanic Gardens of Sydney and an interview with one of our expert pathologists from South Africa (FABI).



[READ THE LATEST ISSUE HERE!](#)



# IPSN UPDATES

## RESOURCES

### New Alert Posters

We have created new [alert posters](#) for organisms that have been highlighted as causing significant problems within botanic collections in recent months. We advise members to remain vigilant and encourage printing and displaying these resources within their facilities to raise awareness among both staff and visitors. Click on the posters to download them:

#### Phantasma scale

With particular preference for palm species, this small scale insect has now spread to North America and the Caribbean. Due to its small size, it can be difficult to detect.



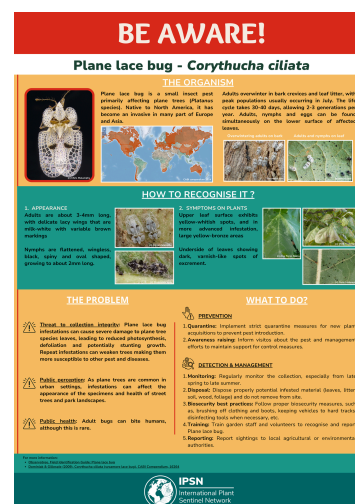
#### New Guinea flatworm

Highly invasive alien species. It was found in botanic garden in British Virgin Islands. It is a concern in Europe, especially in gardens with tropical collections as it can be spread through trade.



#### Plane lane bug

It causes damage to Plane trees. It has been found in London, and it is already causing damage in Europe. Members in the UK are encouraged to report any suspected findings via [TreeAlert](#).



We are developing a biosecurity online course which will provide an entry level overview of the key biosecurity areas within collection management. It will also provide links to templates and examples of documentation that members would be able to download and adapt to their needs. We plan to launch the module by the end of the 2024 and will be available through [BGCI's online training platform](#) in BGCI's website.

## Biosecurity Module

Keep tuned into our website and social media in the next months for new updates!



## NEW MEMBERS

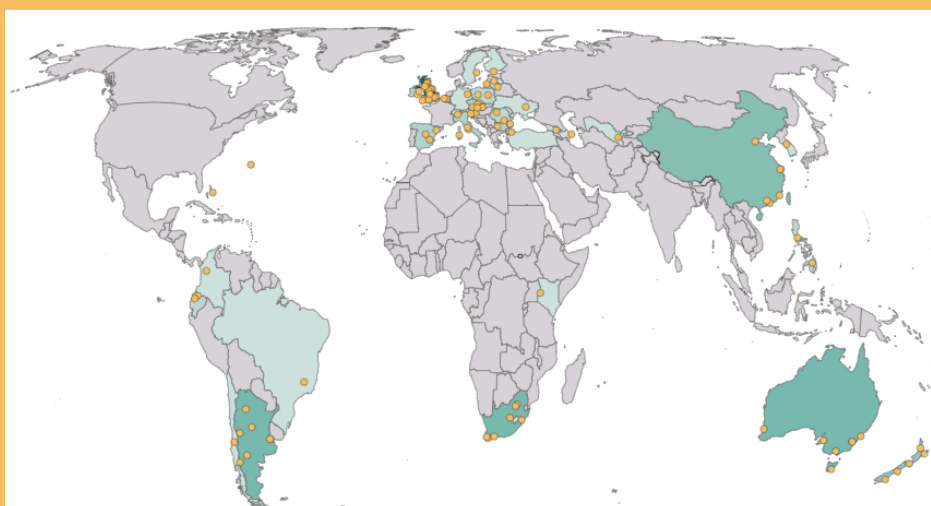
We welcome our newest IPSN members

We are excited to have our first Southeast Asian members joining the network:

- [Bukidnon State University Botanical Gardens and Herbarium, Philippines](#)
- [Makiling Botanic Gardens, Philippines](#)



[Explore here our member's map](#)



## Call for information sharing

## Developing Sooty Bark Disease protocols

We are currently working with Forest Research to collate key information to develop monitoring protocols for early detection and management of Sooty Bark Disease in the UK.

To support this, we would like to learn from your experiences and would appreciate any information you could share regarding:

- Current protocols or methodologies for monitoring the disease
- Any early detection techniques you have found effective
- Reporting and management of cases
- Challenges or lessons learned from your experience

If you would like to contribute with any documentation, advice, case studies, or participate in a brief expert interview, please contact us ([itxaso.quintana@bgci.org](mailto:itxaso.quintana@bgci.org); [lara.salido@bgci.org](mailto:lara.salido@bgci.org)).



[Contact us to participate](#)

## Projects for our 2024-25 Small Grants have been selected

**IPSN  
Small  
Grants**

A new series of projects funded by the IPSN Small Grants will soon begin, driven by topics proposed by our members in response to our recent call for suggestions. The scope of these projects includes looking at the range of plant health recording systems within UK collections to standardise and facilitate data sharing, creating blueprints for resources to help BG/arborescences engage the public in effective biosecurity practices, and offering guidance to enhance the management of biosecurity risks in trans-situ conservation efforts.

Stay tuned to our newsletter for updates on the progress of these initiatives!



## MEMBERS' NEWS

### Biosecurity Best Practice Guidance Leaflets

The Plant Health Centre of Scotland has developed biosecurity best practice guidance leaflets, that hope will be of great use to improve biosecurity practices:



Biosecurity best practice for safe disposal of plant waste and spent growing media

[Download here](#)



Biosecurity best practice for conservation

[Download here](#)

### Call for members' news

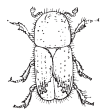
If you have phytosanitary updates, events, resources, or biosecurity concerns to share, send us a brief paragraph with images, and we will include it in the next newsletter.



[Send us your news](#)  
([itxaso.quintana@bgci.org](mailto:itxaso.quintana@bgci.org))



# PROJECT UPDATES



## ➤➤➤ TARGETED SURVEILLANCE IN BELGIUM

The targeted surveillance season for our project in Belgium draws to a close. During the spring and summer months, Botanic Gardens have been surveying target pest and diseases in plant host species, specifically Oak borer beetles, Pine tortoise scale, Japanese beetle, Beech leaf disease, Petrakia leafspot and Rose rosette virus.

During the post-survey workshops, we had participation from representatives from the Botanic Gardens, the National Plant Protection Organisation (NPPO), and diagnosticians from DEFRA to discuss the survey results highlighting the importance of particular environmental conditions in the status and susceptibility of target species to attack by the target organisms.

This year, a total of five gardens participated in the activities. We look forward to continuing our collaboration with the Belgium Garden Network and its members next year and in the years to come.



## CANKER STAIN OF PLANE TRAPPING <<<



In collaboration with Forest Research, we have launched a new initiative for UK botanic gardens aimed at improving preparedness for the arrival of Canker Stain of Plane (*Ceratocystis platani*).

A key element of the initiative is to establish a national network across the UK to monitor for the presence of Canker Stain of Plane using passive spore traps. Gardens have just received the trapping kits, and the monitoring will take place in the following month.



## ➤➤➤ PATHWAY RISK ANALYSIS TOOL REVIEW

During the months of August and September, we have been collaborating with a range of stakeholders (including botanic gardens and arboreta, DEFRA representatives, other partners) across UK to review the Biosecurity Pathways Risk Analysis tool, developed by Fera Lt and Yorkshire arboretum.

The aim of these meetings has been to provide suggestions to improve the tool's methodology, assess its relevance, and test its usability to carry out a pathways risk analysis by staff in Botanic Gardens and other plant products managing organisations.

Having received very valuable input, our next step is to start identifying key areas in need of updates to improve the tool's effectiveness and usability by the Botanic garden and plant collection communities.

## UKGSN: MONITORING TREE HEALTH IN THE UK <<<



The UK Garden Sentinel Network (UKGSN)—a collaboration between PlantNetwork, Observatree, and IPSN—launched a pilot activity to monitoring target pests and diseases across UK trees during the summer period.

The main aim being to bring together volunteers, students and citizen scientist in botanic gardens and arboreta to record the presence and absence of three specific pests and diseases (i.e. great spruce bark beetle, elm-zig-zag sawfly and European mountain ash ring-spot associated virus) and submit observations through Tree Alert.

We are currently collating the feedback and results from this pilot project to plan our 2025 activity calendar.

For more information on this initiative and how you can get your organisation involved [click here](#).



## ➤➤➤ RSB PLANT HEALTH SERIES: BEHIND THE SCENES AT KEW

10th  
October  
2024

The Royal Biological Society, as part of the Plant Health Series, has organised an exclusive event at the Royal Botanic Gardens Kew in the UK. Attendees will hear from a series of expert speakers, as well as an overview of genomic and tree health research taking place at Kew.



[Click here for more information](#)



## ➤➤➤ UK MEMBERS MEETING AT RBG EDINBURGH

18th  
November  
2024

As every year, IPSN UK members and partners will be meeting in-person on the 18th of November at the [RBG Edinburgh](#). This will be an opportunity to catch up in the activities, discuss key biosecurity issues, and learn from the RBG Edinburgh's experiences.

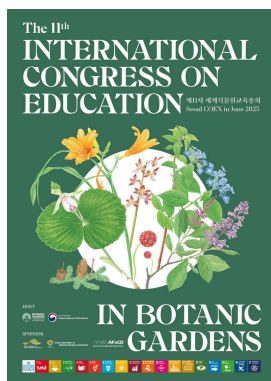
## ➤➤➤ EPPO WEBINAR ON AGRILUS PLANIPENNIS

5th  
December  
2024

The webinar will focus on the current distribution of *A. planipennis* in the EPPO region, control measures undertaken by the EPPO countries in which this pest is already present, and preparedness of other EPPO countries to possible arrival of this pest in their country in the near future. Registration will open in November with further details available in EPPO's site.



[Click here for more information](#)



## ➤➤➤ 11TH INTERNATIONAL CONGRESS ON EDUCATION IN BOTANIC GARDENS

9-13th  
June  
2025

BGCI is excited to announce the 11th International Congress on Education in Botanic Gardens (ICEBG), hosted by the Korea National Arboretum in Seoul, South Korea. With the theme "Education for Change: Botanic Gardens' Role in Global Transformation", the event will focus on reshaping botanic garden education to address biodiversity loss and climate change. This hybrid congress offers a unique chance to collaborate with global experts and contribute to environmental solutions, with options for both in-person and online participation.



[Click here for more information](#)



## CATCH UP!

## FIRST IPSN FORUM FOR SOUTHEAST ASIA <<<

Earlier this month, the Southeast Asian Botanic Garden (SEABG) Network and the International Plant Sentinel Network (IPSN) hosted the first Biosecurity and Plant Health Forum for Southeast Asia. Over 30 participants from six countries gathered to discuss key challenges and set future priorities.




**SEABG**  
Southeast Asia  
Botanic Gardens Network

## WATCH IT AGAIN! <<<

BGCI's July **webinar on Tree Health and Biosecurity** featured Ginette Alexander from the Yorkshire Arboretum, who shared insights from the Tree Health Centre's teaching and engagement activities. We also celebrated the winners of the Marsh Award for Education in Botanic Gardens.



[Watch the recording here](#)



# We hope you had a pleasant reading!

**\*Remember: Update your BGCI [GardenSearch](#) profile and collection information in [PlantSearch](#).**

Updating your GardenSearch profile and uploading your living and seed collections into PlantSearch will facilitate the reciprocal use of our tools, as well as facilitating the identification of gardens with specific plants of interest for IPSN projects.

Please find more information on GardenSearch, and how to update your profile [here](#). More information on PlantSearch can be found [here](#), and access [the guide](#) for information how to upload collection information including explicative videos.

Do share any information you may have on new and emerging pests and diseases, by sending an email to: [listserv@listserv.bgci.org](mailto:listserv@listserv.bgci.org)

Keep up to date with all IPSN news by following us:

[@IPSN\\_BGCI](#)

[www.bgci.org/our-work/networks/ipsn/](http://www.bgci.org/our-work/networks/ipsn/)



**IPSN**

International Plant  
Sentinel Network