

Species Stewards



GCC

Global Conservation
Consortia

Species Stewards of the Global Conservation Consortia are institutions, represented by named individuals, that commit to long-term management of priority species at:

1. Ex situ sites such as at a botanic garden or other collection;
2. Near situ (or similar) conservation sites, such as plantations or reintroduction sites within the natural range of a species; and/or
3. In situ sites where priority threatened species grow as part of the native ecosystem

About Species Stewards:

Species Stewards may manage priority species at any combination of conservation sites, which constitute a portion of the metacollection for a priority species.



A metacollection is a network of coordinated sites that safeguard genetic diversity for a species.

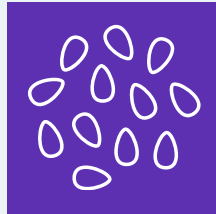
Species Stewards will typically focus efforts on threatened species that have been prioritised by the Consortium.

Sites include but are not limited to, botanic gardens, private collections and/or landholdings, nurseries, parks, universities, indigenous communities' land, government or other managed natural areas, reintroduction sites, seed orchards, and land conservancies.



Activities Supported by Species Stewards:

Acquire and exchange
germplasm with prior
informed consent,
according to all relevant
international, national
and local laws,
regulations and customs



Avoid causing harm to the
environment or biodiversity;
and ultimately support the
long-term conservation of
genetically diverse and
representative plant
populations

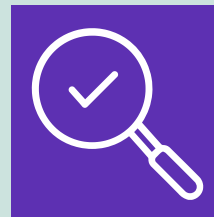


Support and utilize
germplasm for research,
conservation,
educational, and other
activities, in keeping with
the GCC objectives

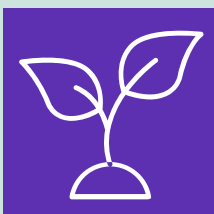
Track Consortium-related
activities, including research,
conservation, and
metacollection work
involving the priority
species, and report to BGCI
and the CSC on an annual
basis



Promote the Consortium and
advocate to policymakers,
funders, the general public,
and others as appropriate;
track and report such activities
to the CSC on an annual basis



Fill gaps in representation
in the metacollection, via
inclusion of accessions
from across the native
range of the species



Develop and share with
Consortium lead
propagation protocols
for priority species

Consider achieving the
ArbNet Arboretum
Accreditation, the BGCI
institutional Accreditations,
and/or other professional
accreditations and
networks



As appropriate, contribute and maintain up-to-date information in BGCI's
GardenSearch, PlantSearch, and Conservation Action Tracker databases, including
upload of taxon, accession and specimen data on an annual basis



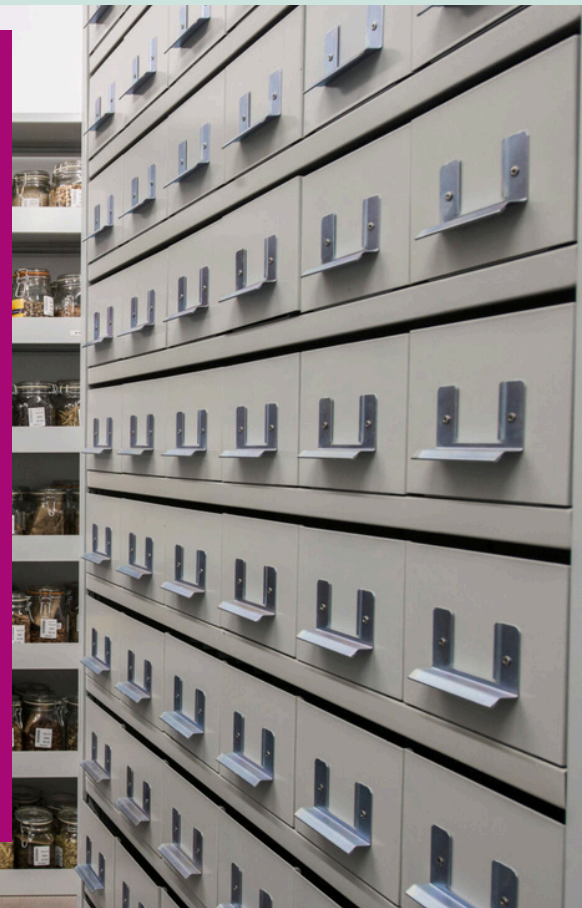
Activities Supported by Species Stewards:

For Species Stewards managing in situ populations:

- document, monitor, and protect naturally occurring populations of priority species according to best practices and expert advice, as possible;
- make their site available to other Consortium participants and other affinitive groups to gather data based on the managed natural populations, as possible

For Species Stewards managing ex situ germplasm/material:

- Record compliance documentation for relevant material acquisitions;
- Document and maintain plants or other viable germplasm and associated information for living accessions and specimens according to best practices in the BGCI Botanic Garden Manual (pgs. 36, 48-64) and expert advice;
- Duplicate and make germplasm available to Consortium participants, proactively, by request, or upon deaccessioning or leaving the Consortium; and maintain and report records of germplasm distribution





Metacollection networks can self-organise and/or identify a **Species Coordinator** to undertake the following activities.

Activities Supported by Species Stewards:

Compile, coordinate, and report activities among Species Stewards and Affiliates for the priority species



Compile or update the IUCN Red List assessment for the priority species

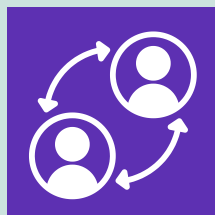


Develop a tailored strategy for building the priority species' ex situ, in situ, and/or near situ (or similar) combined metacollection, that addresses the species' conservation needs

Recruit and support metacollection sites that broadly represent the priority species' natural distribution



Encourage engagement with local and indigenous communities in the region on topics including indigenous and traditional ethnobotanical knowledge



Encourage Species Stewards to contribute updated accession and specimen data for priority species to the CSC and/or BGCI's PlantSearch Pedigree database

Contact the relevant consortium lead to express your interest