

# Influence and Action: Botanic Gardens as Agents of Change



Royal  
Botanic  
Gardens  
Victoria



**BOTANIC  
GARDENS**  
CONSERVATION  
INTERNATIONAL





# 500 delegates, 36 countries, 6 themes

## 10 plenaries, 83 presentations, 12 symposia, 9 workshops, 5 panel discussions, 46 posters



Adapting to Climate Change



Global Conversations



Greener and More Liveable Cities



Plant & Biodiversity  
Conservation



Impactful Engagement and  
Education



Surviving and Thriving in a post-  
COVID World



# Engagement and Education Day

83 delegates, 18 countries

1 plenary, 17 presentations,  
4 workshops, 4 guided tours

(Image: Megan Barstow)





# Final Conclusions and Emerging Themes

Compiled from all session chairs & Silvia Alvarez-Clare,  
Steve Blackmore, Nicole Cavender, Jean Franczyk, Tara  
Moreau, Suzanne Sharrock, Judy West, Damian Wrigley





# Plant & Biodiversity Conservation

## Important Lessons

- ★ The extinction of a species represents the **extinction of experience**.
- ★ Increasing sophistication of plant conservation practices means we **can be agents of change** for biodiversity conservation and restoration.
- ★ The nursery is the “**engine room of everything**” .
- ★ **People, plants, and knowledge are critical**, as are science and horticulture.

*Grevillea jephcottii* at Cranbourne Gardens (Image: ASBP)





# Plant & Biodiversity Conservation

## Calls to Action

- ★ We must **engage with local communities** for holistic biodiversity conservation.
- ★ We must **train and empower** the next generation of practitioners and share our successes and failures
- ★ We must **exchange information and living material** among seed banks and botanic gardens and their nurseries.
- ★ We must **collaborate and share** our data.

Cranbourne Gardens (Image: Patricia Malcolm)

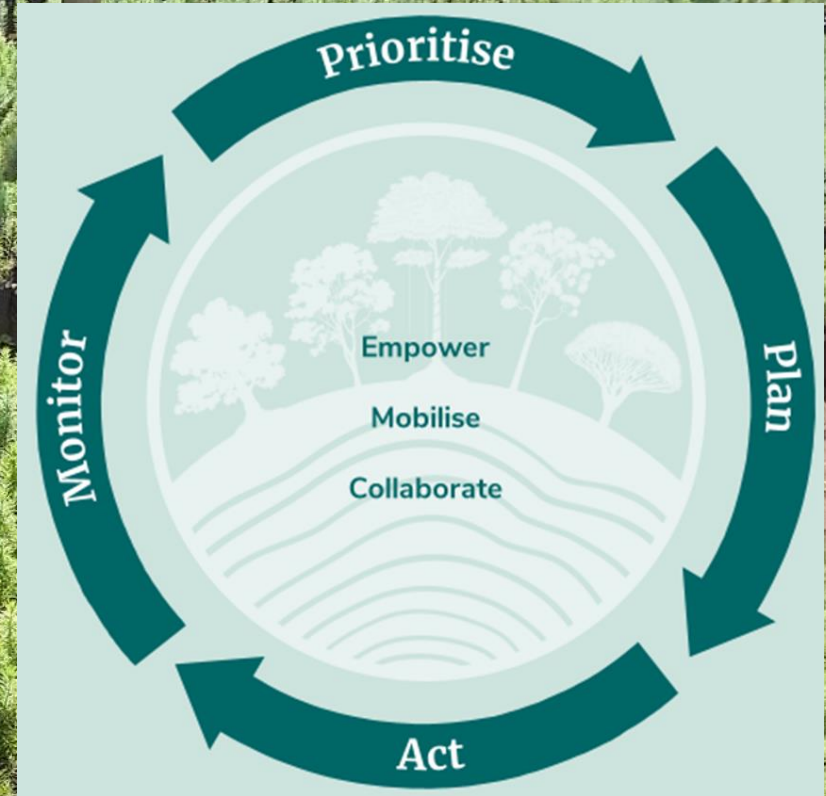




# Tree Conservation

- ★ The Global Tree Assessment is groundbreaking - **generating baseline data** for targeted, informed, and successful tree conservation
- ★ The **Prioritise-Plan-Act-Monitor** framework has worked across six continents.
- ★ Assessments must be **translated into action** and there is an urgent need for scaling up
- ★ **Global Conservation Consortia** are a successful model for creating coordinated ex situ collections (metacollections) of high conservation value

**Calls to Action:** Join a Consortium; send your species conservation actions





# Adapting to Climate Change

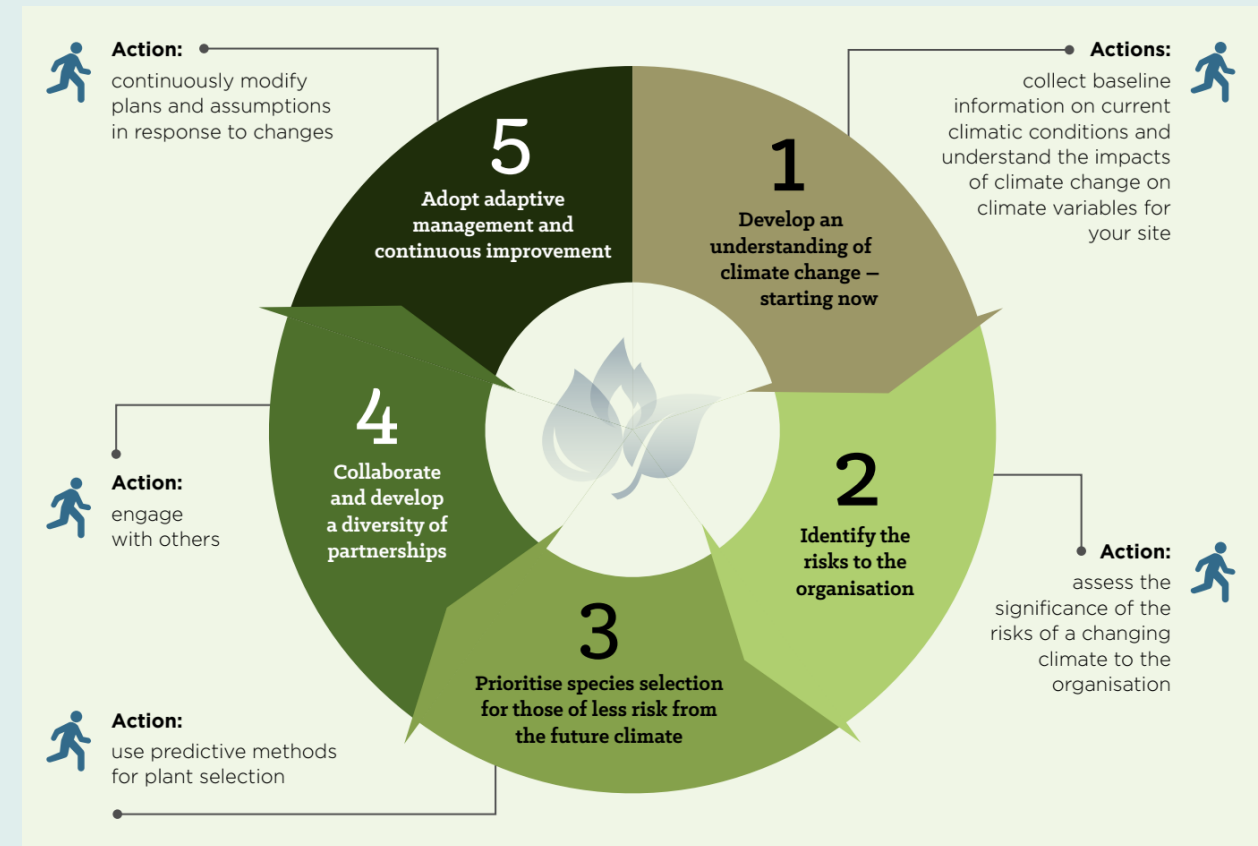
- ★ Climate change-related disasters are **already impacting on ecosystems**, biodiversity, and our collections
- ★ Botanic Gardens should prepare **Climate Adaptation Plans** for their collections and landscapes, as well as **Disaster Plans**, and ensure staff are trained in emergency procedures.
- ★ Large scale tree planting for carbon-sequestration is a major threat to biodiversity. Botanic gardens should use their skills and data to support the **Global Biodiversity Standard** and other biodiversity certifications
- ★ Botanic gardens should play a strong motivating role to **encourage standards** for collection and storage of seed for restoration.
- ★ Large volumes of **restoration seed is needed** for the future to combat the changing climate, impact of invasives and habitat destruction





# Adapting to Climate Change

- ★ Collaboration is key in responding to the impacts of climate change: **sharing our knowledge and expertise** to achieve more together.
- ★ The **Climate Change Alliance of Botanic Gardens** provides an active collaborative forum.
- ★ A range of tools are now available to adapt your collection to a changing climate, including the **Landscape Succession Toolkit**, and the **Climate Resilience Assessment Tool** (both launched at the congress).

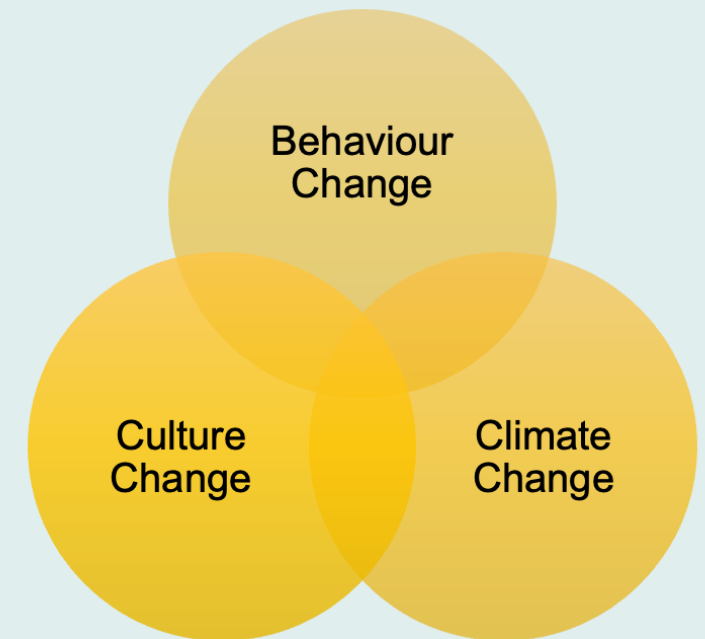




# Impactful Engagement & Education

## Important Lessons

- ★ Botanic gardens around the world are being activated as spaces for all members of our community.
- ★ Garden staff and educators **inspire people** and culture change through our learning landscapes and creative programming.
- ★ **Local and global networks** make us stronger and increase our impact.
- ★ Whatever your expertise, **we are all educators and agents of change.**





# Impactful Engagement & Education

## Calls to Action

- ★ **Stay connected and inspired.** We are exploring how we can support a BGCI Education and Engagement Network. Stay tuned!
- ★ **Showcase stories** of hope and co-creation in response to a changing climate.
- ★ Continue to **accept and adapt** to uncertainty & change.
- ★ Explore different **knowledge systems** towards truth, justice and reconciliation.





# Surviving and Thriving in a Post-COVID World

- ★ The pandemic **increased public appreciation of plants**, contact with nature and -most importantly- botanic gardens as uplifting, safe and inspiring spaces.
- ★ Despite the difficulty of meeting face to face, **digital meetings and communication have proved effective** and reduced our carbon footprint.
- ★ The challenge is to **build resilience** against future crises we should keep in touch after the Congress and share solutions from around the world.



# Global Conversations

- ★ **Major Achievements:** Research, reflection, and consultation inform successful projects, which all yield blueprints, models, or case studies that can inform practice.
- ★ **Challenge:** Tension between urgency for long-overdue change and the time required for an authentic response, especially as we seek to honour First Nation experience and knowledge.
- ★ **Opportunity:** The willingness to change one's perspective by a few degrees can lead to creative and positive change.





# Greener Cities

- ★ Cities are **significant reservoirs of plant diversity** and with human intervention nature can be intensified to support biodiversity.
- ★ There is emerging data showing that botanical gardens provide **motivating and restoring experiences** that can change people's lives in positive ways
- ★ We should be partnering more with **social scientists** to increase this body of knowledge.
- ★ Deploying **skills in garden design** and urban planning is critical to enhancing the impact of our plant collections and linking people with nature.

Royal Botanic Gardens Victoria (Image: S. Alvarez-Clare)





# Global Strategy for Plant Conservation

- ★ The Global Strategy for Plant Conservation is of fundamental importance to both individual gardens and the global botanical community. It is imperative that the GSPC continues into the future.
- ★ The next round of GSPC targets are **yet to be agreed** by Parties to the Convention on Biological Diversity.
- ★ **Speak to your governments** and GSPC Focal Points about the importance of the GSPC to botanic gardens and plant conservation globally.
- ★ As Agents of Change **we must act now to advocate** as a global community for plant conservation under the Post-2020 biodiversity framework.

Geelong Botanic Gardens conservatory (Image: ASBP)





# Congratulations! Awards presented

## Marsh Award for International Plant Conservation

Amelia Martyn Yenson – Australian  
Network for Plant Conservation



## Marsh Award for Education in Botanic Gardens

Rudy Aguilar – Belize Botanic Garden



## Professional Scholarship Award

Thomas Mehlhose, Rockhampton  
Botanic Garden



## Young Member Award

Caitlin Abela, Australian  
Botanic Garden Mount Annan.





# Next steps

## Tools and resources available



Adapting to Climate Change



Global Conversations



Greener and More Liveable Cities



Plant & Biodiversity  
Conservation



Impactful Engagement and  
Education



Surviving and Thriving in a post-  
COVID World



# Plant Conservation Action – Click to Join



**ERA**

Ecological Restoration  
Alliance of Botanic Gardens



**GTA**

Global Tree  
Assessment



**BGCI**

Tree Conservation Fund



**GCC**

Global Conservation  
Consortia



Magnolia



Erica



Dipterocarps



Cycads



Acer



Nothofagus



Oak



Rhododendron



GLOBAL TREES  
CAMPAIGN



**IPSN**

International Plant  
Sentinel Network



**GSCC**

Global Seed  
Conservation Challenge

# Explore, Collaborate and Share



BGCi  
**Directory of  
Expertise**

Share your  
expertise



BGCi  
**Garden  
Search**

Update your garden  
profile



BGCi  
**Plant  
Search**

Add your plant/  
seed collections



BGCi  
**Threat  
Search**

Check level of  
threat of a taxon



BGCi  
**GlobalTree  
Search**

Find distribution of  
a tree



BGCi  
**GlobalTree  
Portal**

Send known conservation  
actions on trees

## New tools

 BGCi  
**PlantShare**

Responsible exchange of plant  
material for conservation between  
organisations

**Climate Assessment** Tool

Check suitability of trees in predicted future  
climate scenarios

**Index Seminum**

Annual exchange of seeds  
between organisations



# Other available resources



# Become Members



**BOTANIC  
GARDENS**  
CONSERVATION  
INTERNATIONAL

Botanic Gardens Conservation International (BGCI) currently represents 700 + botanic institutions in more than 100 countries around the world.



Botanic Gardens Australia & New Zealand Limited (BGANZ) currently links more than 130 + botanic gardens.



BGCI newsletter  
Cultivate

BGANZ  
mailing list



**SEABG**

Southeast Asia  
Botanic Gardens Network

Join a network

## 2022 Ukraine Botanic Garden Appeal

BGCI is working to support the botanic garden community in Ukraine in time of need. Help us raise £100,000.

£65,216.64  
DONATED

£100,000  
TARGET



### Anthony Hitchcock Species Recovery Fund

Support institutions carrying out threatened plant species reintroductions and recovery for their long-term survival in the wild in honour of Anthony Hitchcock who committed his life to the conservation of endangered plants in southern Africa.



### BGCI's Tree Conservation Fund

At least 3,500 tree species are on the brink of extinction and we must act now. Support BGCI's Tree Conservation Fund today!



### Disaster Recovery Fund

BGCI is working to support the botanic garden community impacted by disasters of all kinds, including severe weather events and armed conflict.



### Donate to BGCI

Plants are essential for all life on earth, yet one-fifth of all plant species are threatened with extinction! No matter what size donation, every contribution makes a real difference to us.



The Global  
Biodiversity  
Standard

### Global Biodiversity Standard

The world's only international certification that specifically recognises and promotes the protection, restoration, and enhancement of biodiversity. Support the Standard today!



### Global Botanic Garden Fund

Support plant conservation in botanic gardens through a donation to BGCI's Global Botanic Garden Fund.

**DONATE:** Several funds available to help gardens and conservation work worldwide





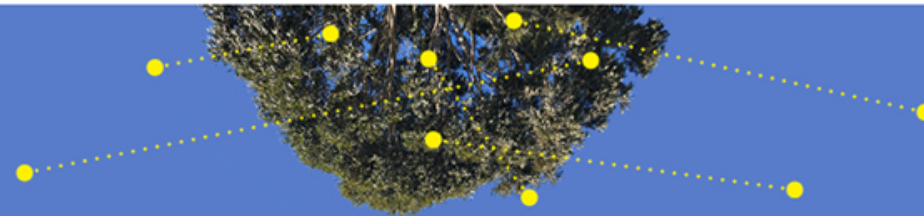
## The challenge is great.

There are a wide range of data, tools, resources and databases now available to support our work. We must take advantage of these.

Through sharing knowledge, skills, building partnerships, and strengthening local and global networks, we can maximise our impact.

***"Strive for hope of gain instead of fear of loss"***

*Carmel Mbizo (SANBI)*



# Sponsored by

