

Botanic Gardens Conservation International
The world's largest plant conservation network



The BigPicnic Project

Big Questions – engaging the public
with Responsible Research and
Innovation on Food Security

BigPicnic

Food security



BGCI

Plants for the Planet

“Food security exists when all people, at all times, have physical and economic access to sufficient, safe and nutritious food that meets their dietary needs and food preferences for an active and healthy life”. (World Food Summit, 1996)



BGCI

Plants for the Planet

Global food security in numbers



800 MILLION

people are undernourished in terms of energy intake.

2 BILLION

people suffer from one or more micronutrient deficiencies.

1.4 BILLION

people are overweight, of whom **500 MILLION** are obese.

Why botanic gardens?



BGCI

Plants for the Planet

- Conduct conservation and research related to food security
 - Bring different expertise in food security
- Connect people to plants
 - Empower visitors to be responsible for their own food choices.

Project overview

3 year project, 19 partners

Brings together public, scientists, policy-makers, other stakeholders to address global food security

Co-creation with local people

Exhibitions, science cafés

Generate dialogue and build greater understanding of food security issues

Give a voice to public on RRI in food security

Communicating views to policy-makers

UiO : Natural History Museum
University of Oslo

 universität
wien
Botanical Garden


INSTITUTE OF
ARCHAEOLOGY

 WILA
Bonn


MUSEU NACIONAL DE
HISTÓRIA NATURAL E DA CIÊNCIA
UNIVERSIDADE DE LISBOA


LISBOA
UNIVERSIDADE
DE LISBOA




Botanic Garden
Meise

Hortus
botanicus
LEIDEN

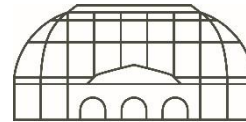


HELLENIC AGRICULTURAL
ORGANIZATION - DEMETER


universität
innsbruck



Balkan
Botanic
Garden of
Kroussia



BG | Botanischer Garten &
BM | Botanisches Museum
Berlin



Universidad
de Alcalá



REAL JARDÍN BOTÁNICO
JUAN CARLOS I



Orto Botanico
di Bergamo
Lorenzo Rota



UNIVERSITY
BOTANIC
GARDENS



УНИВЕРСИТЕТСКИ
БОТАНИЧЕСКИ
ГРАДИНИ



MINISTERIO
DE ECONOMÍA, INDUSTRIA
Y COMPETITIVIDAD

 CSIC
CONSEJO SUPERIOR DE INVESTIGACIONES CIENTÍFICAS



waag society



Royal
Botanic Garden
Edinburgh



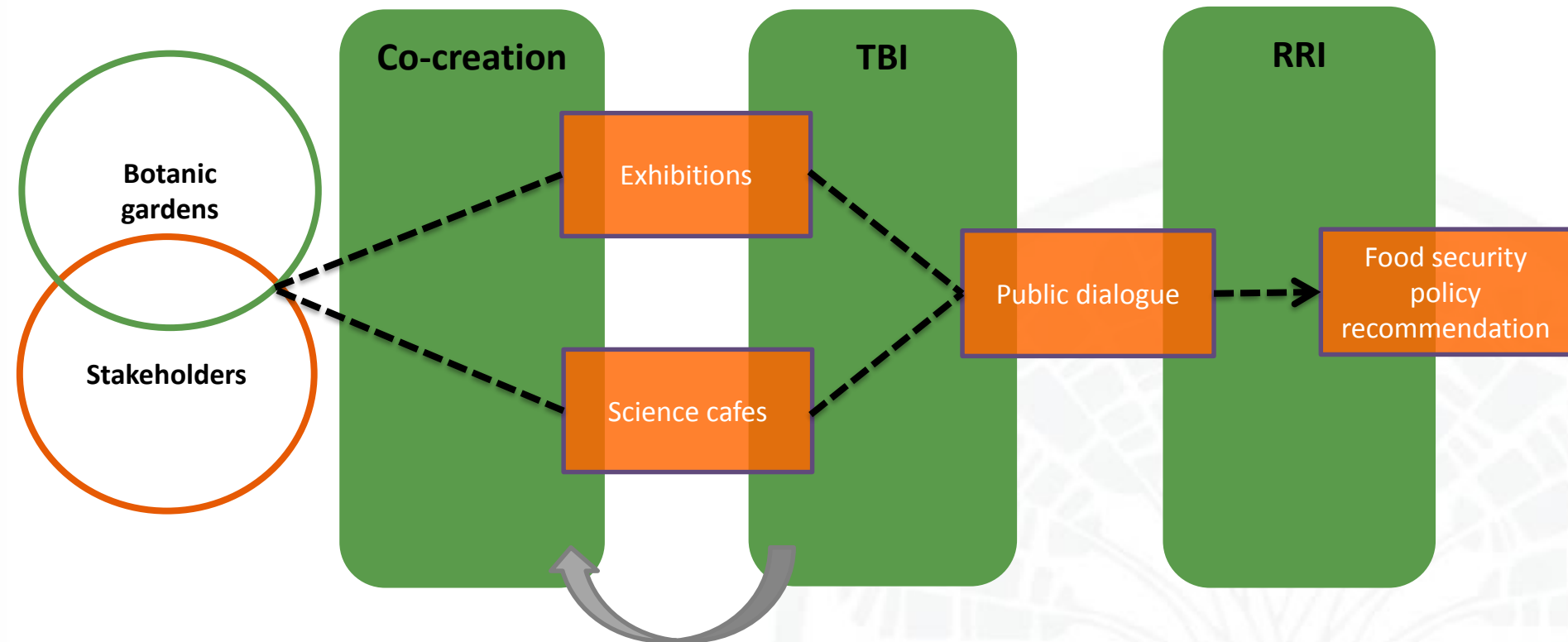
BGCI
Plants for the Planet

BigPicnic in practice



BGCI

Plants for the Planet



Co-creation

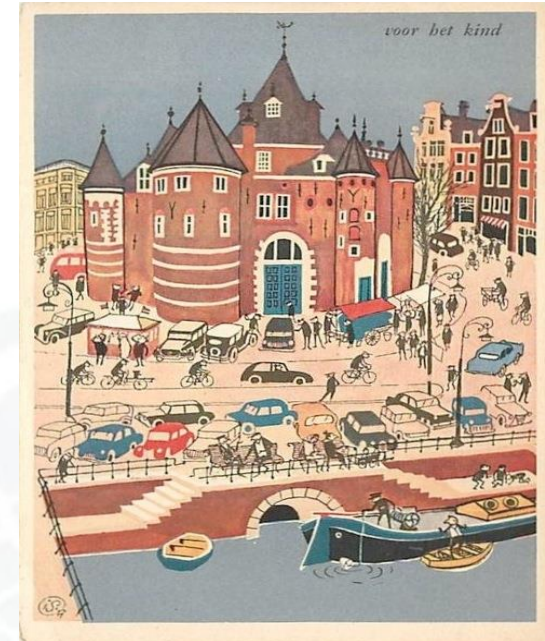


BGCI

Plants for the Planet

“**Co-creation** describes joint or partnership-oriented **creative** approaches between two or more parties, especially between an institution and its stakeholders, towards achieving a desired outcome.

While the term is sometimes used interchangeably with ‘collaboration’, co-creation places a greater emphasis on process. Similarly, emphasis is placed on creating **conditions of equality** among the different stakeholders involved in the creative process: the contributions of the different co-creators are equally valid. Such approaches also promote **greater trust** and **more sustainable relationships** between the different parties involved.”



waag society

Co-creation



BGCI

Plants for the Planet

Exhibitions

103 activities (a range of locations)

~180,000 people reached



*Mobile discovery cart
(Bergamo Botanical Garden
Archive)*



*Interviewing the public at
Botanic Garden Meise
(Ruben Saldana)*

Science cafés

At least 102 events

At least 3,000 people reached

*1st science café in Botanic Garden
and Botanical Museum Berlin
(Jonathon Augustin)*



*Science café during science festival
(university Botanic Garden, Sofia)*



Ficha técnica

Exposição itinerante no âmbito do projeto europeu "Big Picnic, Big Questions", desenvolvido no Museu Nacional de História Natural e da Ciência da Universidade de Lisboa (MUHNAC-ULisboa)

Coordenação | MUHNAC - ULisboa
Raquel Barata

Equipa Big Picnic Portugal | MUHNAC - ULisboa
Ana Teresa Neves
Elsa Prates
Raquel Barata
Tânia Ferreira

Revisão Científica
António Monteiro | MUHNAC - ULISBOA
Comité UNESCO Matemática do Planeta Terra
Cláudia Viegas | Escola Superior de Hotelaria e Turismo do Estoril
Graça Ribeiro | Associação Colher para Semear; Câmara Municipal de Lisboa
Equipa Big Picnic Portugal

Design Expositivo
TOYNO - space experience desing studio
toyno.com

Produção
Expoload



The project Big Picnic, Big Questions was funded by the European Union Horizon 2020 research and innovation programme under grant agreement No 751060



Verfallsdatum (Best-before)

Partner: Botanic Garden and
Botanical Museum, Freie
Universität Berlin

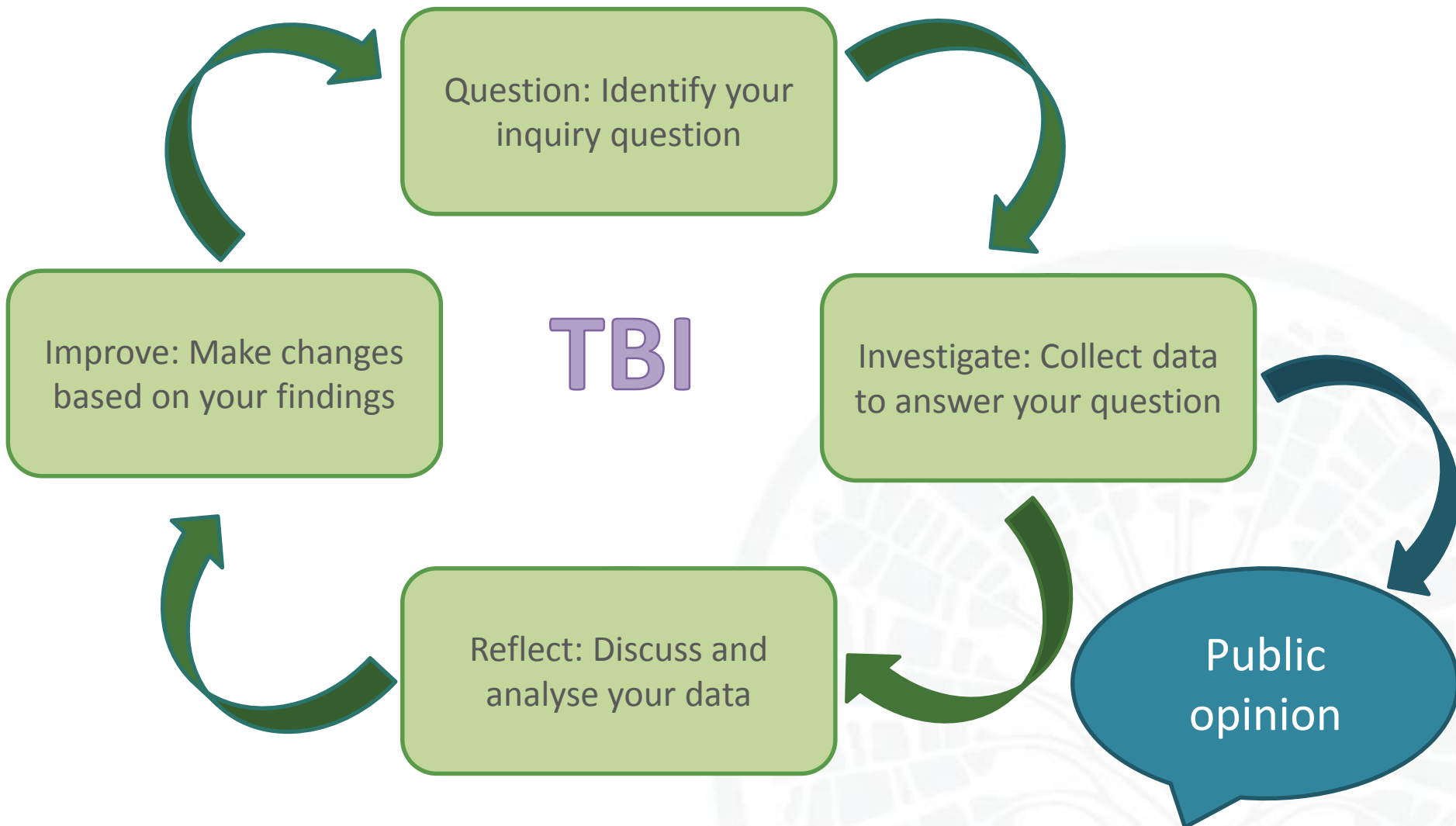


Team-Based Inquiry



BGCI

Plants for the Planet



Responsible Research & Innovation



BGCI

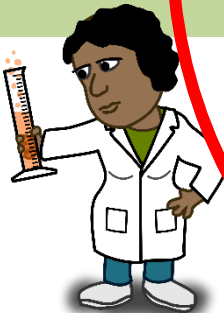
Plants for the Planet



A set of measures
better align R&I w

Societal challenge:
FOOD SECURITY

d in Horizon 2020 to
s and expectations of



Outcomes of RRI



BGCI

Plants for the Planet

✓ Engaged publics



✓ Responsible actors and institutions



✓ Ethically acceptable



✓ Sustainable



✓ Socially desirable



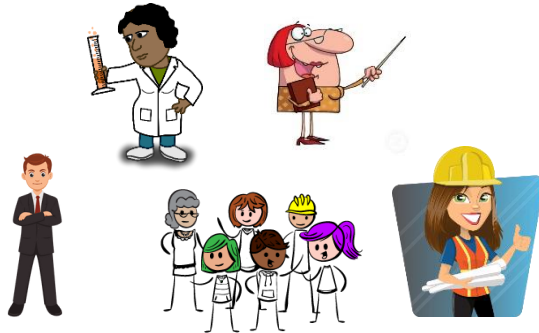
Process dimensions



BGCI

Plants for the Planet

Diverse and inclusive



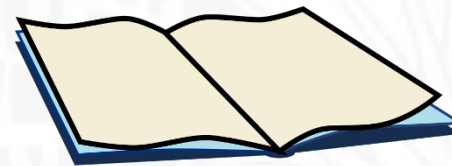
Anticipative and reflective



Responsive and adaptive to change



Open and transparent



Why BigPicnic and RRI?



BGCI

Plants for the Planet



Act as hub/mediators

Facilitate dialogue

Develop mutual understanding

Bring new perspectives

Empower people to take ownership

Contribute to development of responsible actors and institutions

Provide recommendations





BGCI

Plants for the Planet

Where does our food
come from?

Why compost?

Responsibility

How to eat healthy
and sustainable food

Access to nutritional
food

Food footprints

Future of our food

Aromatic and
medicinal plants

Forgotten food plants

Throw away or eat?

Alternative food
supply chains

Life cycle of food

The relationship between
climate change,
biodiversity and food
security

What happens to your
identity when you have to
move and put down roots
in another culture?

Encouraging
sustainable and
efficient food
production

Heritage



BGCI

Plants for the Planet



Defining food security



BGCI

Plants for the Planet



Why BigPicnic and RRI?



BGCI

Plants for the Planet



What next?



BGCI

Plants for the Planet

- Produce a report for EU
- Highlight public opinions, issues
- Influence future EU funding streams and food security policy



Final Festival

Big Picnic

Wednesday 28th February, 2019
Royal Botanic Garden of Madrid, Spain





BGCI

Plants for the Planet

Connecting People • Sharing Knowledge • Saving Plants

Our Mission is to mobilise botanic gardens and engage partners in securing plant diversity for the well-being of people and the planet

Descanso House, 199 Kew Road, Richmond, Surrey, TW9 3BW, UK

www.bgci.org

 [@bgci](https://twitter.com/bgci)