

# Implementing GSPC Targets 5 and 2: Kew's Tropical Important Plant Areas Programme

Colin Clubbe, Royal Botanic Gardens  
Kew

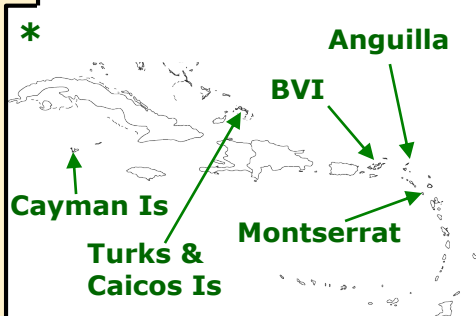
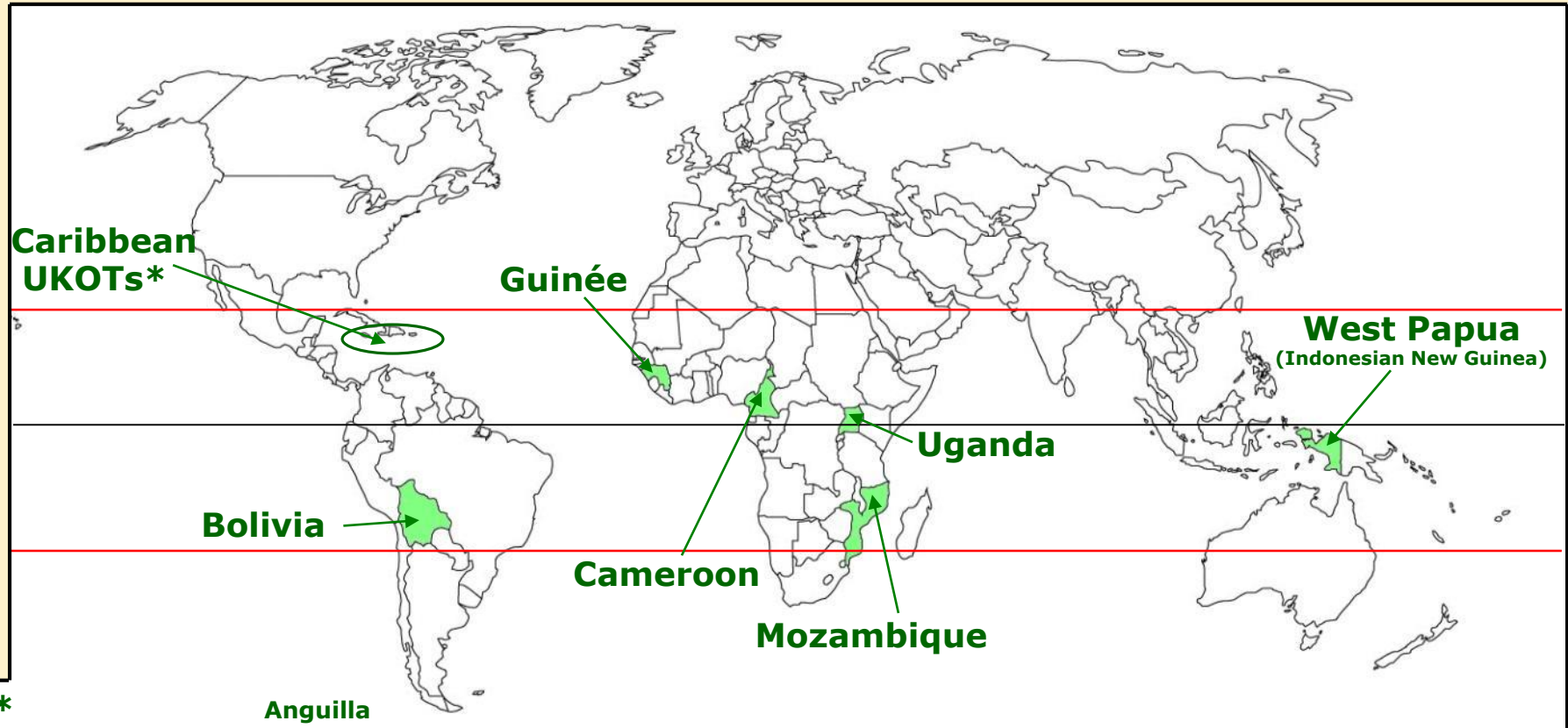
# GSPC Target 5

At least 75% of the most important areas for plant diversity of each ecological region protected with effective management in place for conserving plants and their genetic diversity



- Tropical Important Plants Areas (TIPAs) identified as a Strategic Output
- Implement a TIPAs programme
- Work with Plantlife to extend Important Plant Areas work into the Tropics
- Review IPA Criteria, particularly its application to the Tropics
- A global consultation
- Based on this review, revise and publish revised Criteria

# TIPAs: Phase 1 (2015-2020)



## 7 countries / regions selected:

- strong, long-term in-country collaborations in place
- on-going joint research & conservation programmes
- wealth of collections-based data available

# Identifying and conserving Important Plant Areas (IPAs) around the World



A guide for botanists, conservationists,  
site managers, community groups  
and policy makers

- Important Plants Areas (IPAs) are the most important places in the world for wild plant and fungal diversity that can be protected and managed as specific sites
- The aim of the IPA programme is to identify these priority sites and work towards their conservation and management

## Important Plant Areas: revised selection criteria for a global approach to plant conservation

Iain Darbyshire<sup>1</sup> · Seona Anderson<sup>2</sup> · Anna Asatryan<sup>3</sup> · Andrew Byfield<sup>2</sup> · Martin Cheek<sup>1</sup> · Colin Clubbe<sup>1</sup> · Zeineb Ghrabi<sup>3</sup> · Timothy Harris<sup>5</sup> · Charlie D. Heatubun<sup>6</sup> · James Kalema<sup>7</sup> · Sékou Magassouba<sup>8</sup> · Ben McCarthy<sup>2</sup> · William Milliken<sup>1</sup> · Bertrand de Montmollin<sup>9</sup> · Eimear Nic Lughadha<sup>1</sup> · Jean-Michel Onana<sup>10</sup> · Doumbouya Saïdou<sup>11</sup> · Anca Sârbu<sup>12</sup> · Krishna Shrestha<sup>13</sup> · Elizabeth A. Radford<sup>14</sup>

Received: 23 September 2016 / Revised: 4 January 2017 / Accepted: 10 February 2017  
© The Author(s) 2017. This article is an open access publication

**Abstract** Despite the severe threats to plant habitats and high levels of extinction risk for plant species in many parts of the world, plant conservation priorities are often poorly

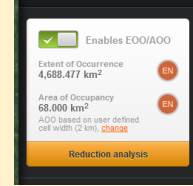
# TIPAs: Criteria & Activities

**A**  
Threatened Species

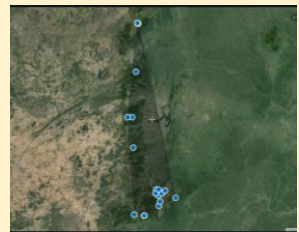


**C**  
**o**  
**r**  
**e**  
**a**  
**c**  
**t**  
**i**  
**v**  
**i**  
**t**  
**i**  
**e**  
**s**

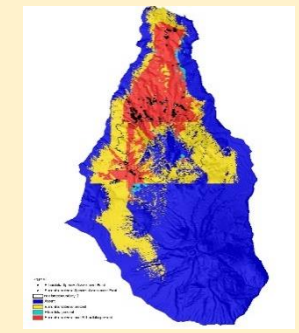
**Species redlisting**



**Site-based inventories**  
**Diversity mapping**



**Species mapping and field survey**



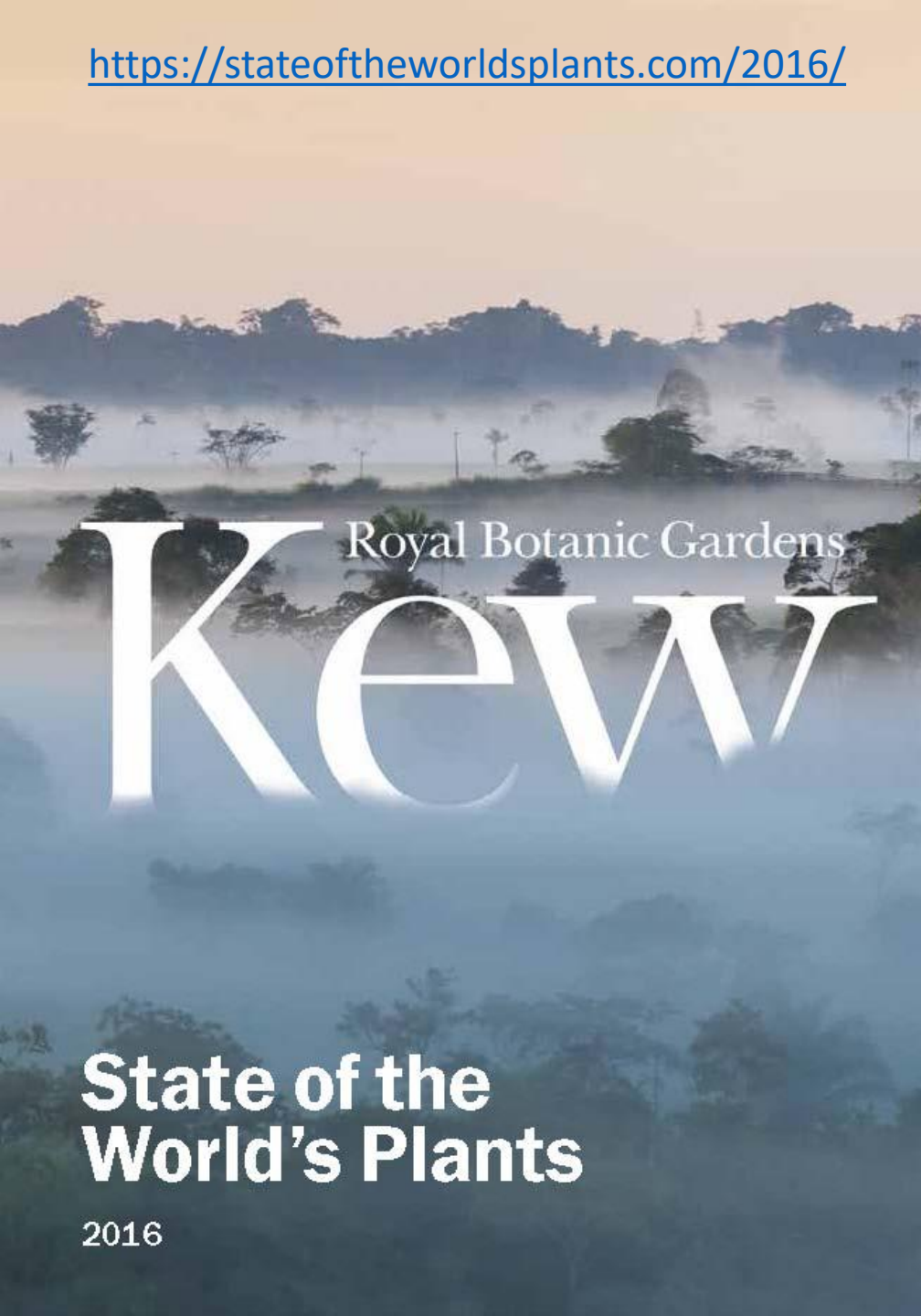
**ID & mapping of:**  
• crop wild relatives  
• medicinal plants  
• timber species etc.

**Vegetation mapping**  
**Habitat threat assessments**



**B**  
Botanical Richness

**C**  
Threatened Habitats



- Annual Horizon scan of the state of the world's plants:
  - Status
  - Threats
  - Policies
- Contributions from the global scientific community

# IMPORTANT PLANT AREAS

---

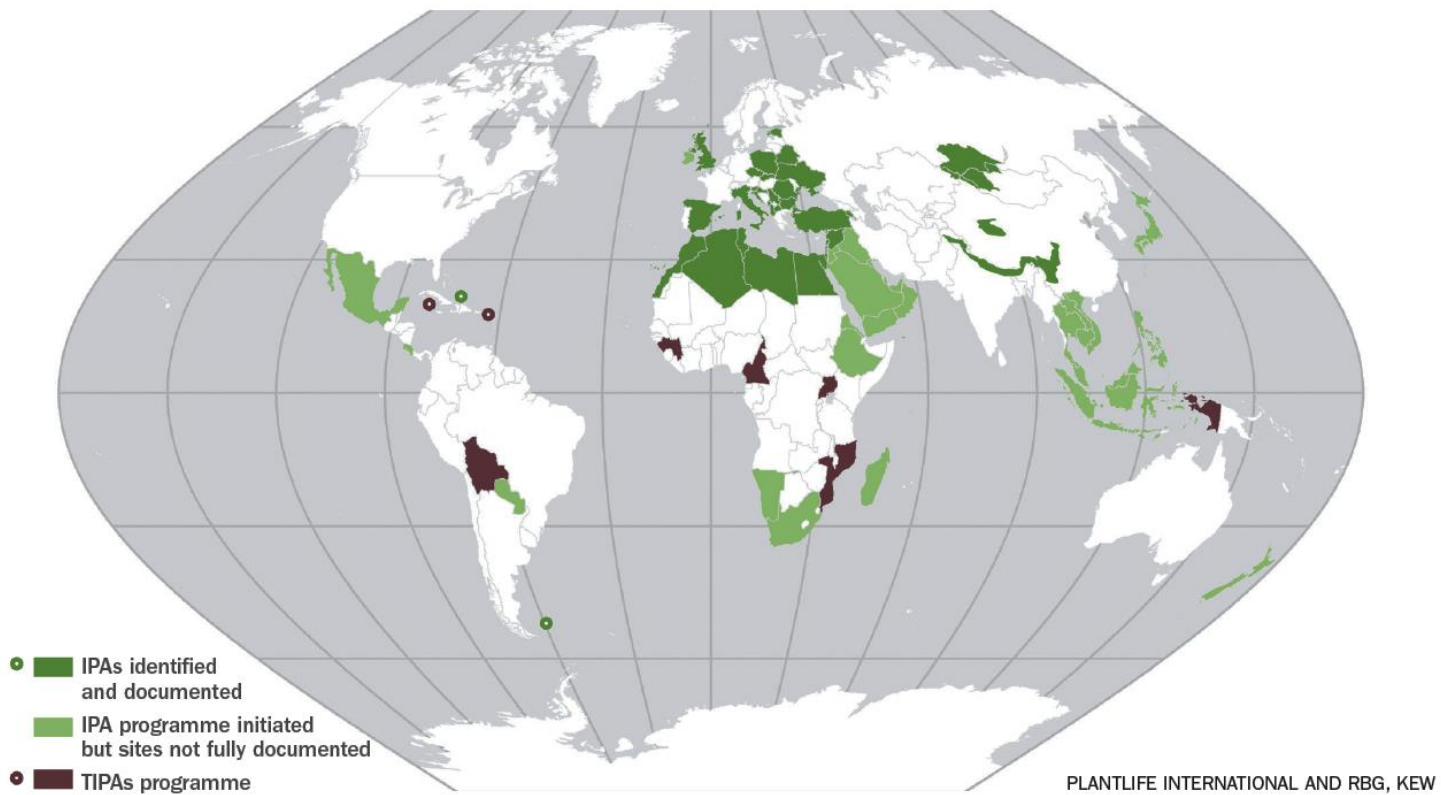
# 1,771

**IMPORTANT PLANT AREAS HAVE  
BEEN IDENTIFIED GLOBALLY  
BUT VERY FEW CURRENTLY HAVE  
CONSERVATION PROTECTION**

Where in the world are the most important areas to protect because of the incredible diversity of plants that they contain? Where are the areas, habitats and ecosystems of high importance for plants? What is their present conservation status?

<https://stateoftheworldsplants.com/areas-important-for-plants>

## COUNTRIES THAT HAVE DESIGNATED IMPORTANT PLANT AREAS (IPAS) OR ACTIVE IPA PROGRAMMES



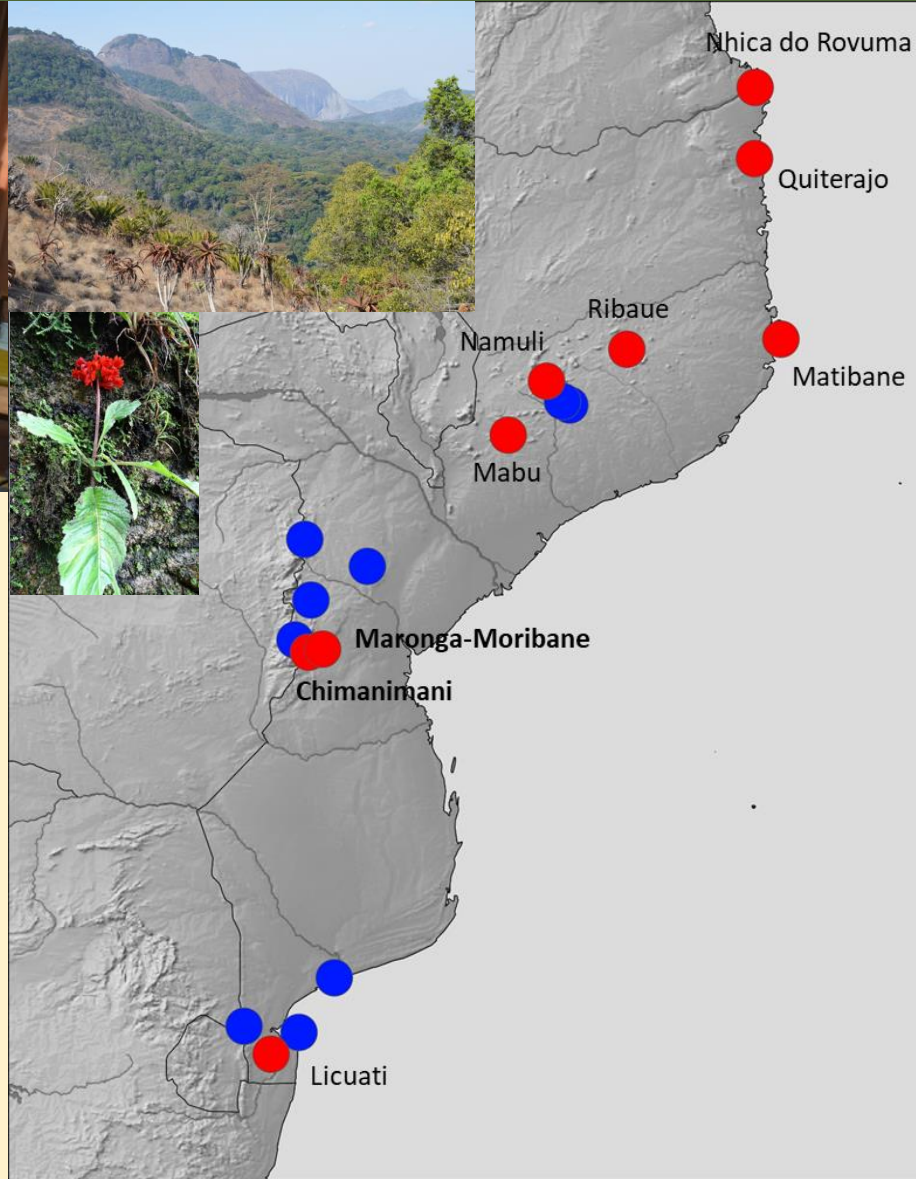


# BVI: Network of 18 TIPAs identified



The British Virgin Islands network of Tropical Important Plant Areas (TIPAs)

# TIPAs Progress: Mozambique

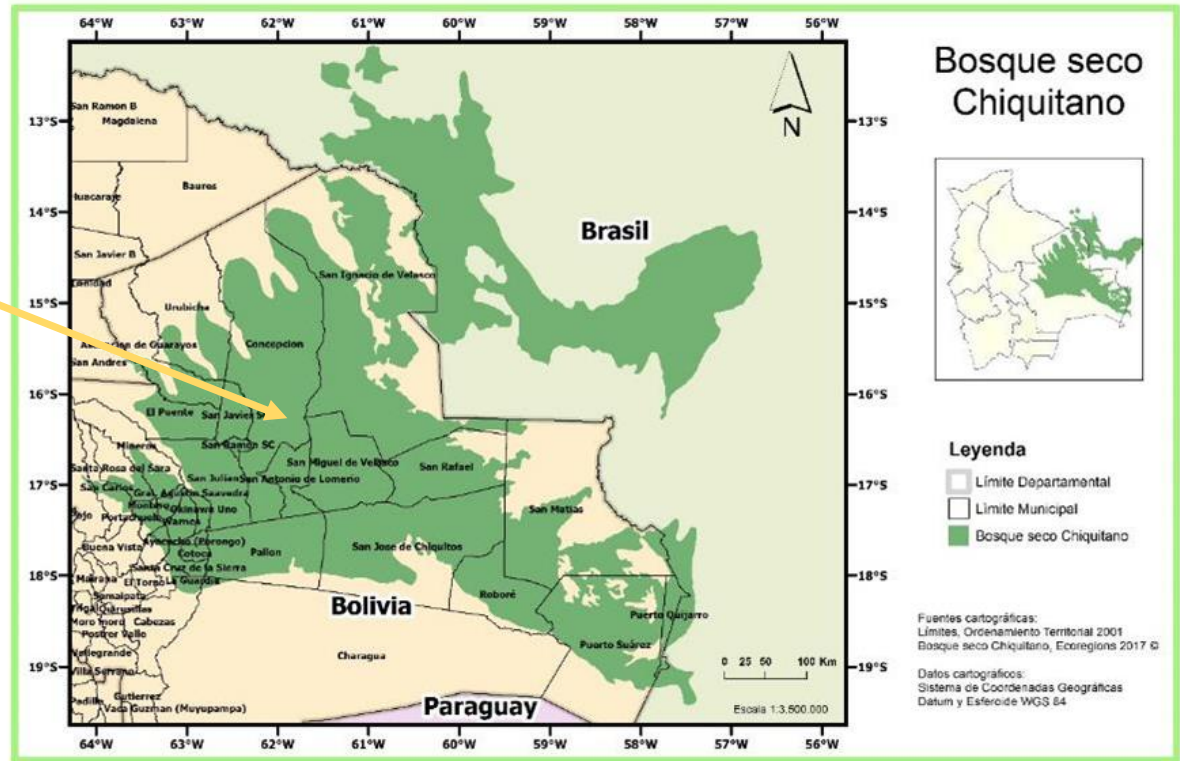
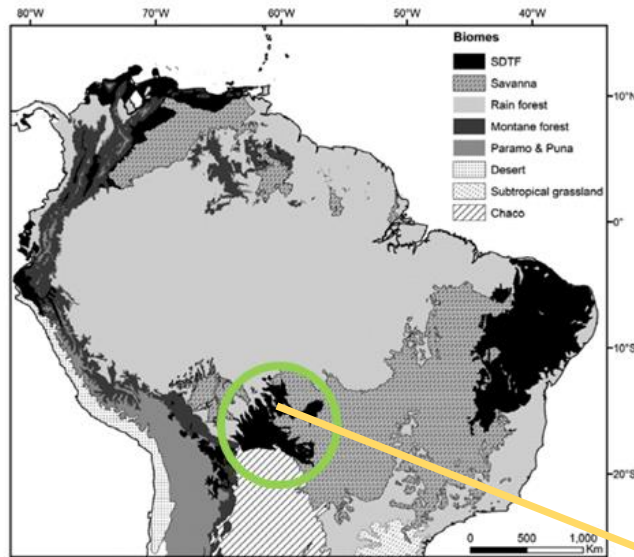


- 2 TIPAs/redlisting workshops in Maputo
- Data gathered on @600 target species
- Field expeditions to 8 key localities
- c. 180 species redlisted
- 2 TIPAs – Chimanimani Mountains & Maronga-Moribane Forests
- Several further sites with sufficient data for TIPA qualification

# TIPAs Progress: Bolivia

## Chiquitania- Eastern Lowlands of Bolivia:

- Chiquitania dry forest
- Cerrado
- Pantanal



- Fieldwork underway
- Data for red listing collected



# EXTINCTION RISK AND THREATS TO PLANTS

What is our best estimation of how many plants are threatened with extinction and what are the greatest causes of threats?

<https://stateoftheworldsplants.com/extinction-risk>

**ONE  
IN  
FIVE**  
PLANTS ARE  
ESTIMATED TO  
BE THREATENED  
WITH EXTINCTION

# Plants under pressure – a global assessment



The IUCN Sampled Red List Index for Plants

Enter Red List search term(s)

GO

OTHER SEARCH OPTIONS

[Discover more](#)

DONATE NOW!

LEAST CONCERN (LC)    NEAR THREATENED (NT)    VULNERABLE (VU)    ENDANGERED (EN)    **CRITICALLY ENDANGERED (CR)**    EXTINCT IN THE WILD (EW)    EXTINCT (EX)



**AGARWOOD**  
*Aquilaria malaccensis*

© Ahmad Fuad Morad. CC BY-NC-SA 2.0.

- 391,000 plant species (SOTWP, 2016)
- 25,452 evaluated (7%)
- 12,781 threatened
  - 3% of described species threatened
  - 50% of evaluated species threatened

**21%** OF GLOBAL PLANT SPECIES ARE CURRENTLY THREATENED WITH EXTINCTION ACCORDING TO IUCN RED LIST CRITERIA

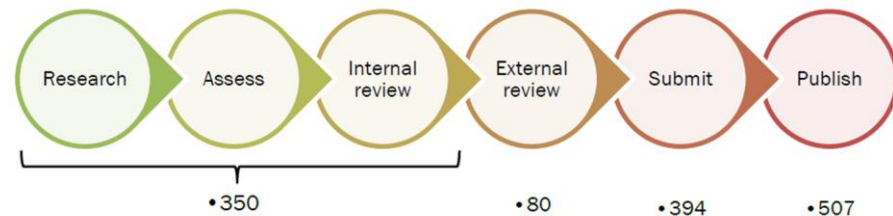


*Hyacinthoides non-scripta*,  
bluebell



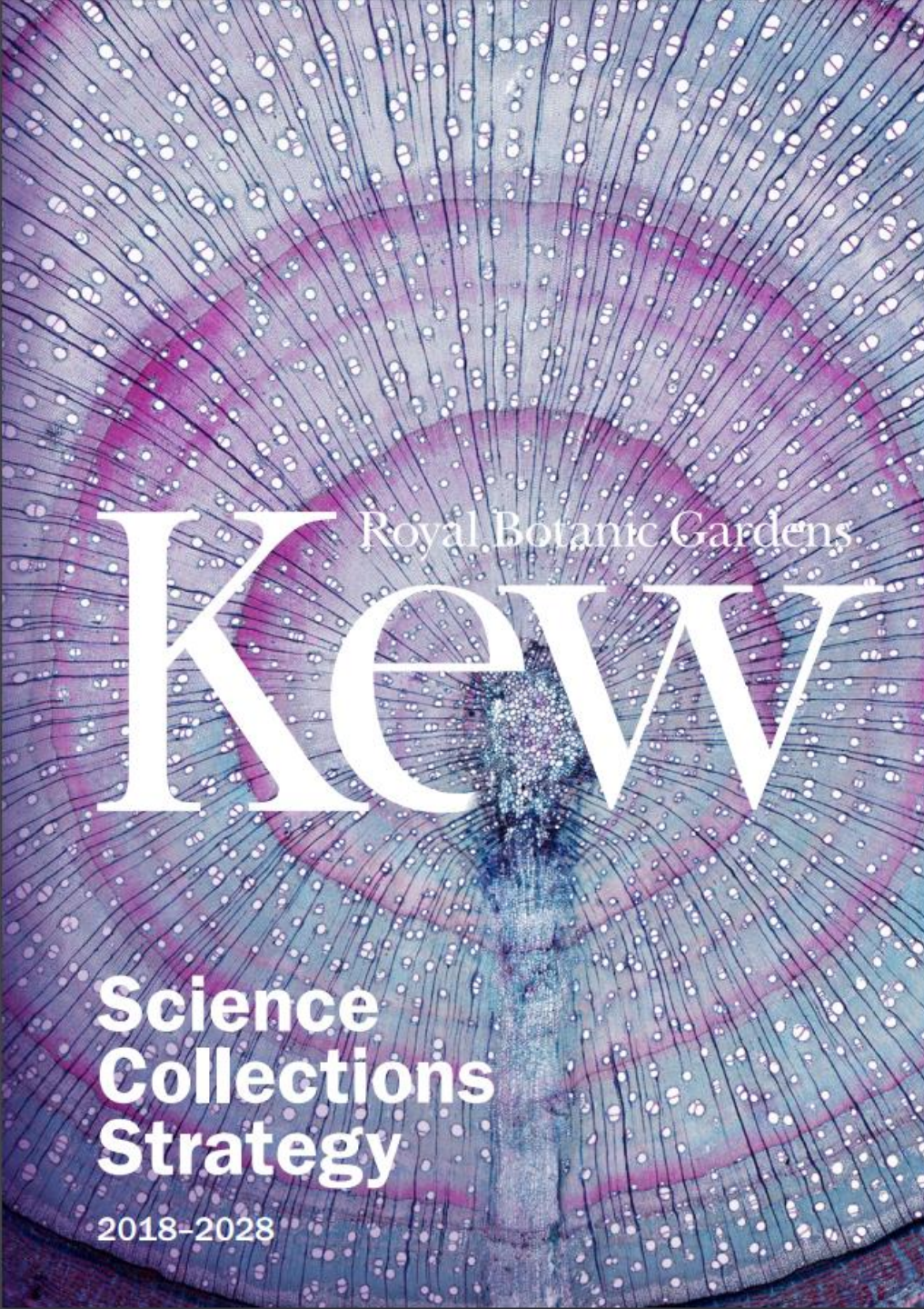
Kew Plant  
Assessment Unit  
First year report – August 2017

- Plant Assessment Unit established in 2016
- Initial funding from Toyota through IUCN
- Increase under-represented taxa on IUCN Red List of Threatened Species
- 2021 Target: 4,750 assessments incl:
  - *Coffea* (123 spp)
  - *Cola* (120 spp)
  - *Myrcia* (700 spp)



# TIPAs driving Red Listing

- Bolivia (200 species)
- Mozambique (>180 species)
- Guinea (271 species)
- New Guinea (70 tree ferns; 400 orchids)
- Uganda (>100 species)
- Phase 2 TIPAs starting:
  - Guinea Conakry
  - Ethiopia



- Published in 2018
- 10-year Strategy
- Includes commitments to continue Red Listing and TIPAs activities
- Identified collections critical to meeting our research priorities
- Through this a commitment to GSPC Targets 5 and 2 beyond current 2020 deadline
- Challenge: Securing resources to accelerate everything!



Thank You