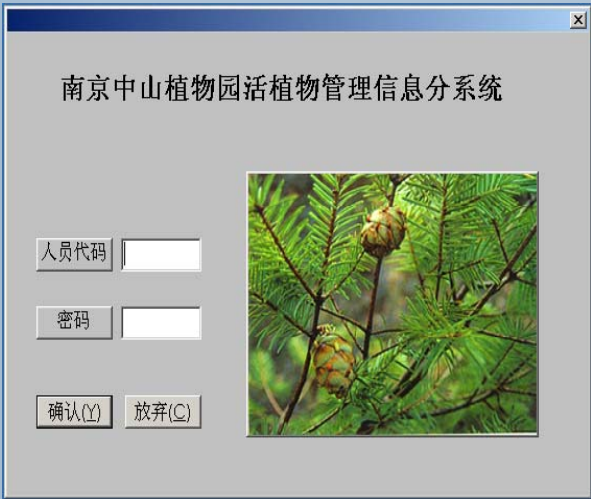


# Management System of Living Collections Information and Planting maps for Nanjing Botanical Garden Mem. Sun Yat-Sen

Xia Bing, Chen Yinghui, Sheng Ning, He Shanan, Gu Yin  
Nanjing Botanical Garden Mem. Sun Yat-Sen



## Software development environment

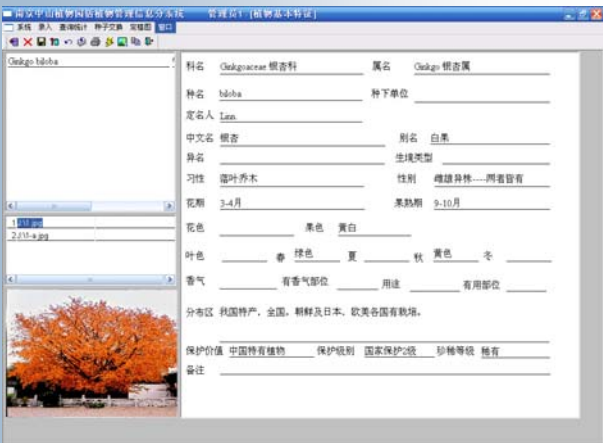
Operating system: MICROSOFT WINDOWS 98/ME/XP/2000/2003  
Database: MICROSOFT SQL SERVER 2000

## Tool for software development

Programmable aids for database : POWERBUILD 9.0  
GIS graphic system: MAPINFO

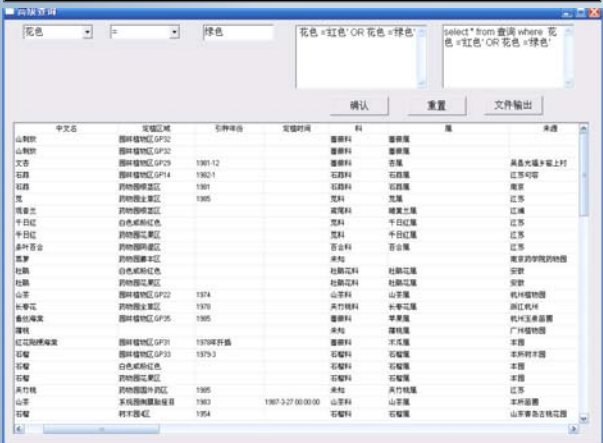
## Main functions

Living Collections Information database has three parts: character of plant, introduction and planting. Every part has the function of entering, retrieve, maintenance, printing.



Various retrieve:  
●Full screen retrieve  
●Fuzzy retrieve  
●Penetrated retrieve

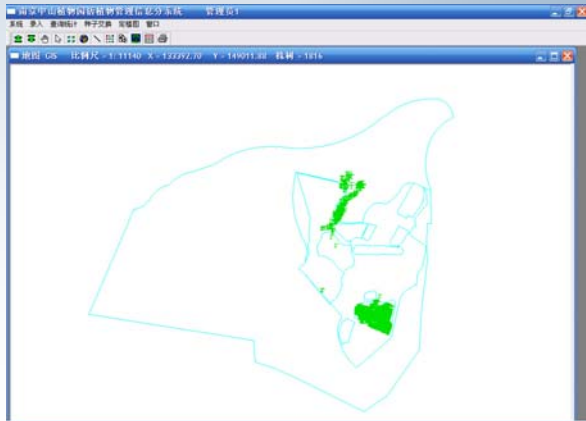
●Advanced retrieve with combined conditions



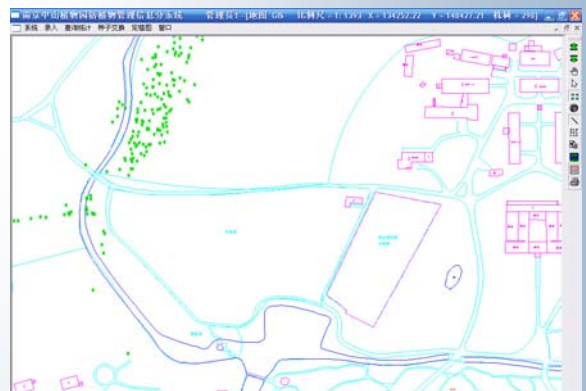
## Comprehensive authority management



Depending on the coordinate values measured by wild plants, Management System of Planting maps dynamically generates map layers at real time.



## Stepless zoom



Distance measurement  
Flash function  
Neighbor function  
Layer control

The two-way inquiry between space data and property data



## CONCLUSIONS

The data is visualized by fully utilizing the map information management ability of MapInfo and the powerful data access and operating ability of PowerBuilder. The two-way inquiry realizes combination for space data and property data. The system is greatly improves the capability of managing, querying, processing and analyzing the living plant information.