

General Knowledges of Chinese Woody Plants Introduction in Arboretum Mlyňany SAS

Peter Hořka, Mária Lanáková, Zuzana Knetigová

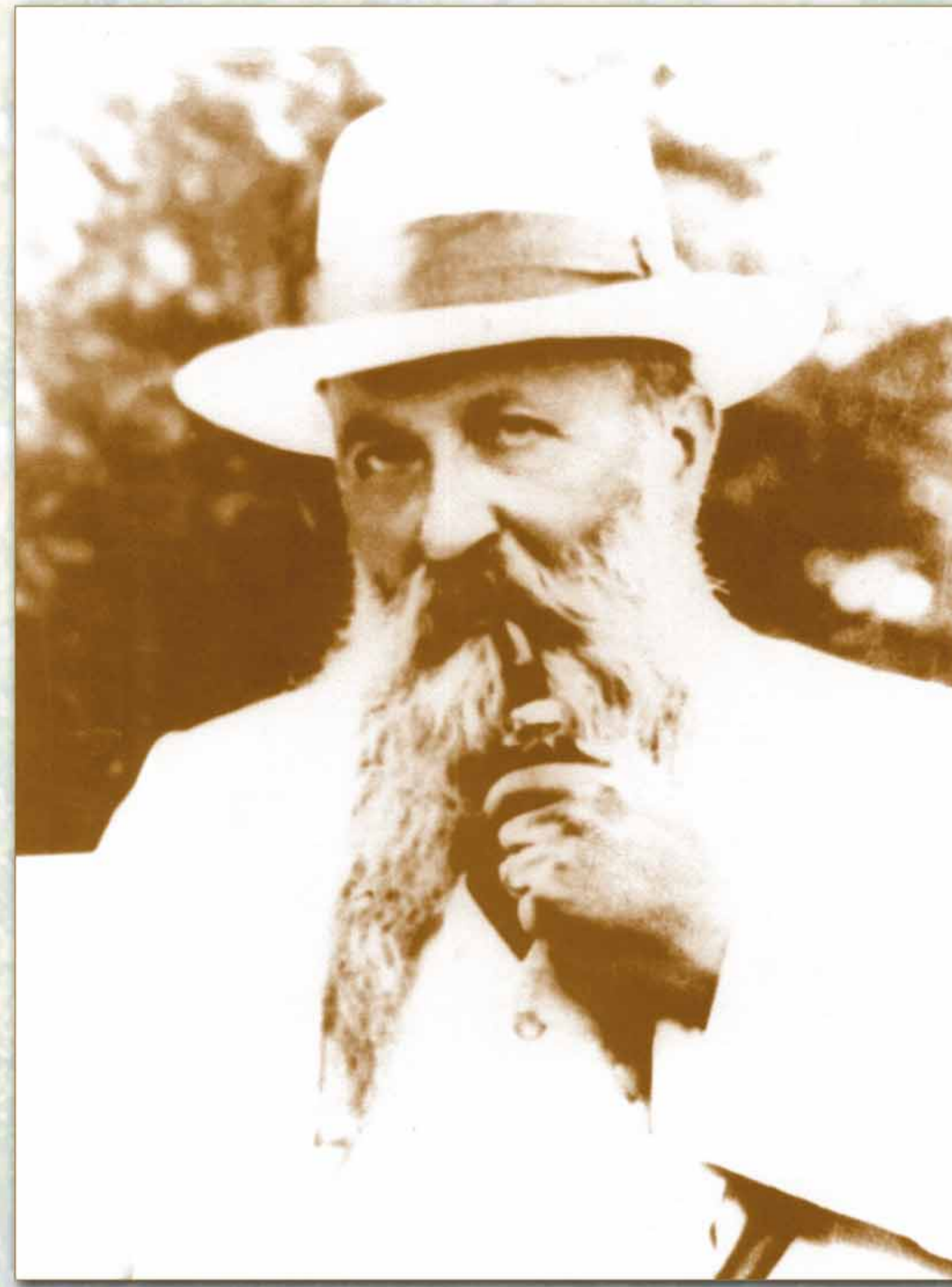
Arboretum Mlyňany SAS, Vieska nad Žitavou, 951 52 Slepčany, E-mail: arboretum_mlynany@nexta.sk

Introduction

The phase of a complex, scientifically controlled introduction of woody plants, results of which are sites that have maintained even in present times their national or central-European significance, such as Arboretum Mlyňany SAS, begun to develop since the end of the 19th century. It was the founder of the Arboretum Mlyňany, Dr. Stefan Ambrozy-Migazzi, who is considered as a pioneer of decorative evergreens' introduction into the continental conditions of Central Europe. On the basis of the Arboretum Mlyňany was later developed the scientific research plan of the Institute of Dendrobiology of the Slovak Academy of Sciences. Among many of the research projects was predominant the experiment with chinese woody plants introduction into the conditions of Arboretum Mlyňany SAS.



Evergreen woody plants in the Oak-Hornbeam growth in 1912



Founder of the Arboretum Mlyňany, Dr. Stefan Ambrozy-Migazzi



Table 1. Overview of the evergreen woody plants introduction in Arboretum Mlyňany among years 1894-1925.

Number of Species	Origin Asia (China)	Origin Europe	Origin America	Other Areas
247	98 (62)	79	54	16
100 %	40 % (25 %)	32 %	22 %	6 %

Table 2. Number of chinese woody taxa with respect to collecting place among years 1961-1966

Area	Peking	Wuhan	Quilin	Lushan	Nanking	Hangtschou	Kanton	AM
No. of Taxa	408	34	65	162	241	30	7	453

Beginning of the Chinese Woody Plants Introduction in Arboretum Mlyňany

The founder, Dr. Ambrozy-Migazzi, was impressed with evergreen mediterranean dendroflora and desired to create an evergreen park. He enforced the stepwise introduction theory. He began to introduce the plant material already acclimatized from special nurseries from 1892. Owing to Camillo Schneider and Arnost Silva-Tarouca he was in contact with many botanists and dendrologist and personally came to know the plant material of the nurseries of Hesse, Späth, Simon Louis, Seidel, Böhje a many others.

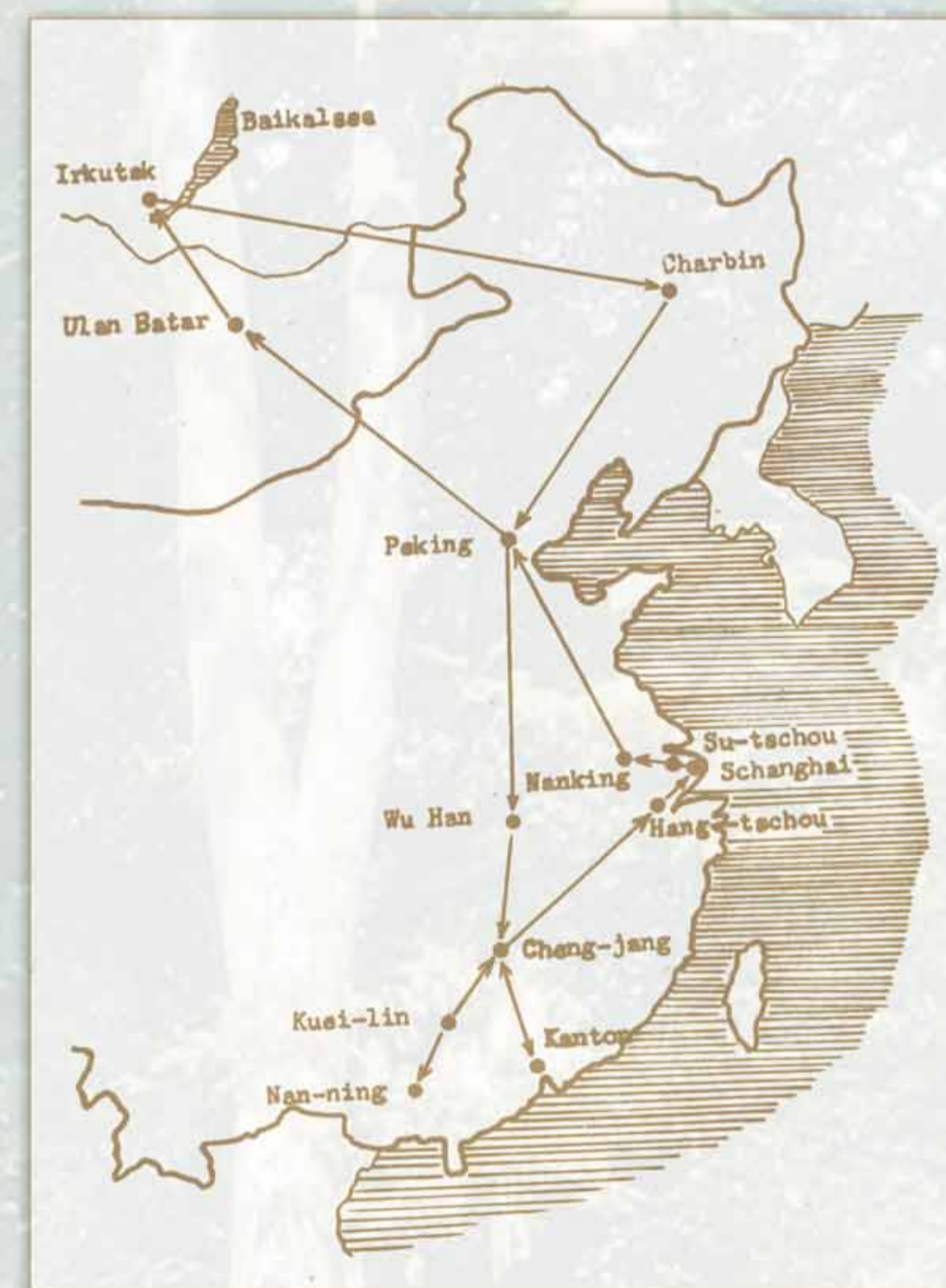
Present State and Perspectives of Chinese Woody Plants Introduction

In 1992 Arboretum Mlyňany SAS celebrated its 100. anniversary and was done broad inventory of plant collections.

Besides the chinese woody plants introduction the institution deals with introduction of the whole East Asian Dendroflora, North American Dendroflora and in the last time there are new areas under construction as Slovak Dendroflora, Cultivars Collection and Rosarium. The project of endangered Slovak woody plants rescue is solving currently.

Expedition to China and Study of Chinese Woody Plants Acclimatization

It was the expedition to China in 1960 considered as the important inducement for study and chinese woody plants introduction into the conditions of Arboretum Mlyňany SAS. It was realized in September and October of 1960 by the former director Benčat and the chief gardener Kovalovský.



Journey route during the expedition to China in 1960



Table 3. Origin of woody plants species in the Arboretum Mlyňany collections according to phytogeographical areas in 1992

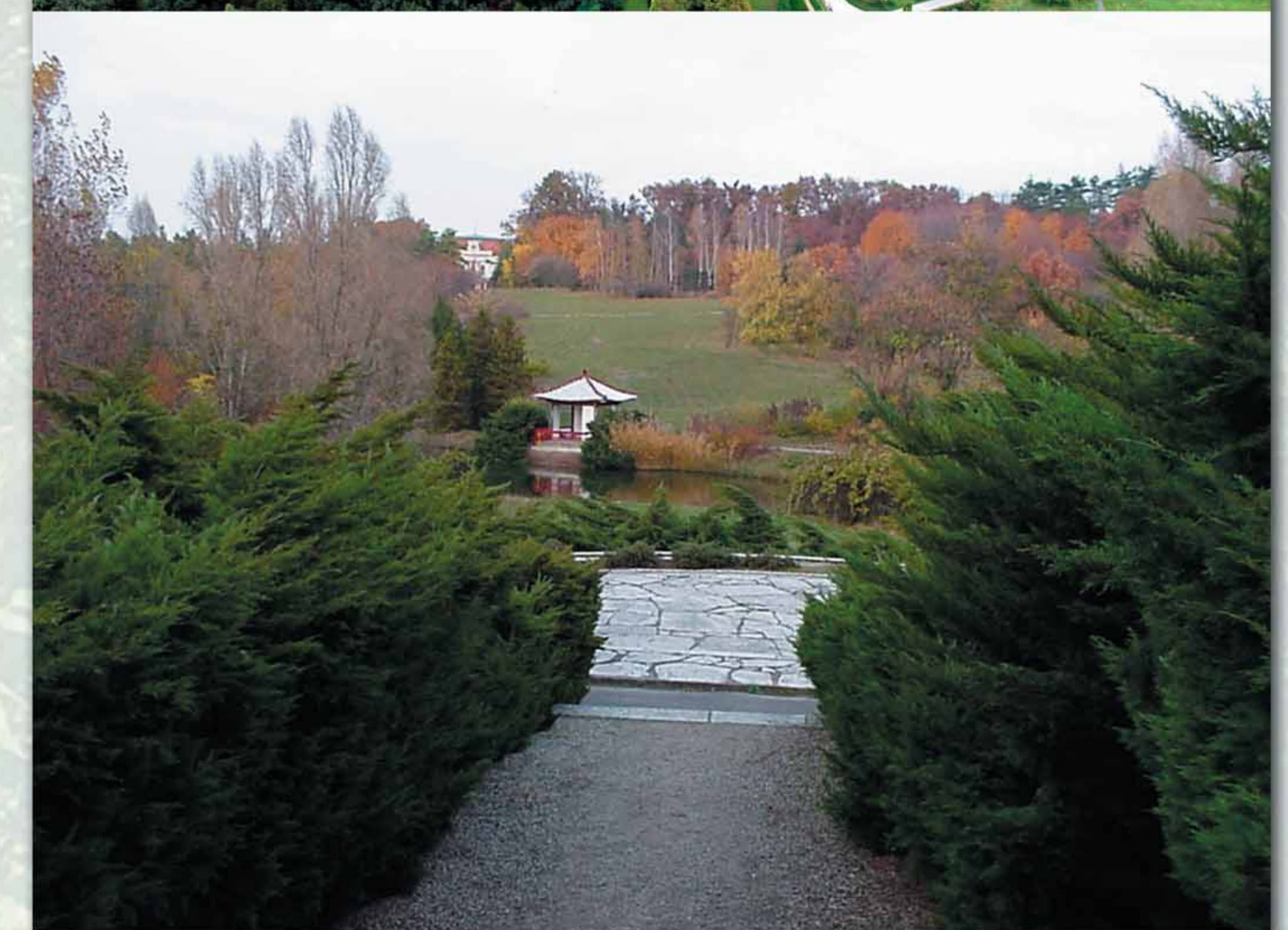
No. of Species	Origin Asia (China)	Origin Europe	Origin America	Other Areas
1405	850 (423)	210	272	73
100 %	60,5 % (30,1 %)	14,9 %	19,4 %	5,2 %



The same specimen of *Magnolia liliiflora* Desr. in 1968 and 2005



Section of the Phenological Area in 1968 and 2006



East Asian Area of the Arboretum Mlyňany SAS in 2006