

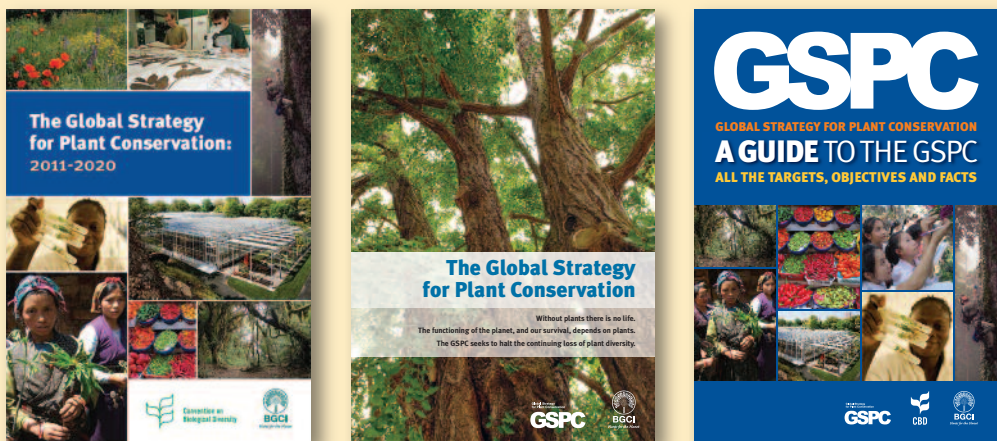
# Linking the Global Strategy for Plant Conservation (GSPC) with CITES

Sara Oldfield and Suzanne Sharrock  
Botanic Gardens Conservation International

The GSPC is a cross-cutting programme of the Convention on Biological Diversity (CBD) with 16 plant conservation targets to be achieved by 2020.

BGCI has supported implementation of the GSPC since its initial adoption in 2002 through three main areas of activity.

## 1. Promotion of the GSPC



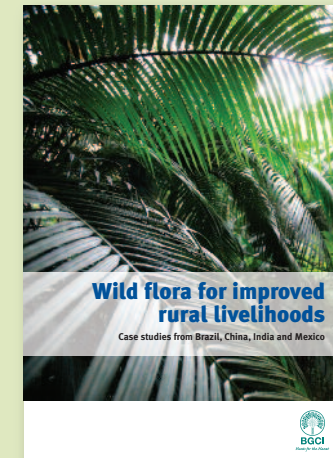
## 2. GSPC toolkit (www.plants2020.net)



## 3. Organizing national and regional workshops to promote implementation



## Linkages between the GSPC and CITES



The CITES Strategic Vision 2008-2020 (CITES Res. Conf. 16.3) states to  
*“Conserve biodiversity and contribute to its sustainable use by*

*ensuring that no species of wild fauna or flora becomes or remains subject to unsustainable exploitation through international trade ....”*

GSPC Target 11 is for  
*“No species of wild flora to be endangered by international trade”*

CITES Res. Conf. 16.5, invites Parties to promote and enhance collaboration between their GSPC focal point and their CITES Authorities

## Other examples of synergy

Documenting and understanding plant diversity: Floras and red lists (GSPC targets 1 and 2); Checklists and Appendices (CITES)

Managing plant diversity in production lands (GSPC Target 6); Managing timber species (CITES – ITTO)

Sustainable harvesting (GSPC Target 12); Non-detriment findings (CITES)



Botanic gardens help to implement both GSPC and CITES



[www.bgci.org](http://www.bgci.org)