

Presentation to the JFB Congress,
Lyon 2008,
on the Eden Project

22nd October 2008

Ian Martin, Curator for Semiarid and
Arid Regions, and member of the
Eden Knowledge Team







Eden Project Mission

To promote an understanding, internationally, of the critical importance of our relationship with plants; supporting and showcasing projects and encouraging individual actions and choices that will lead to sustainable land use.































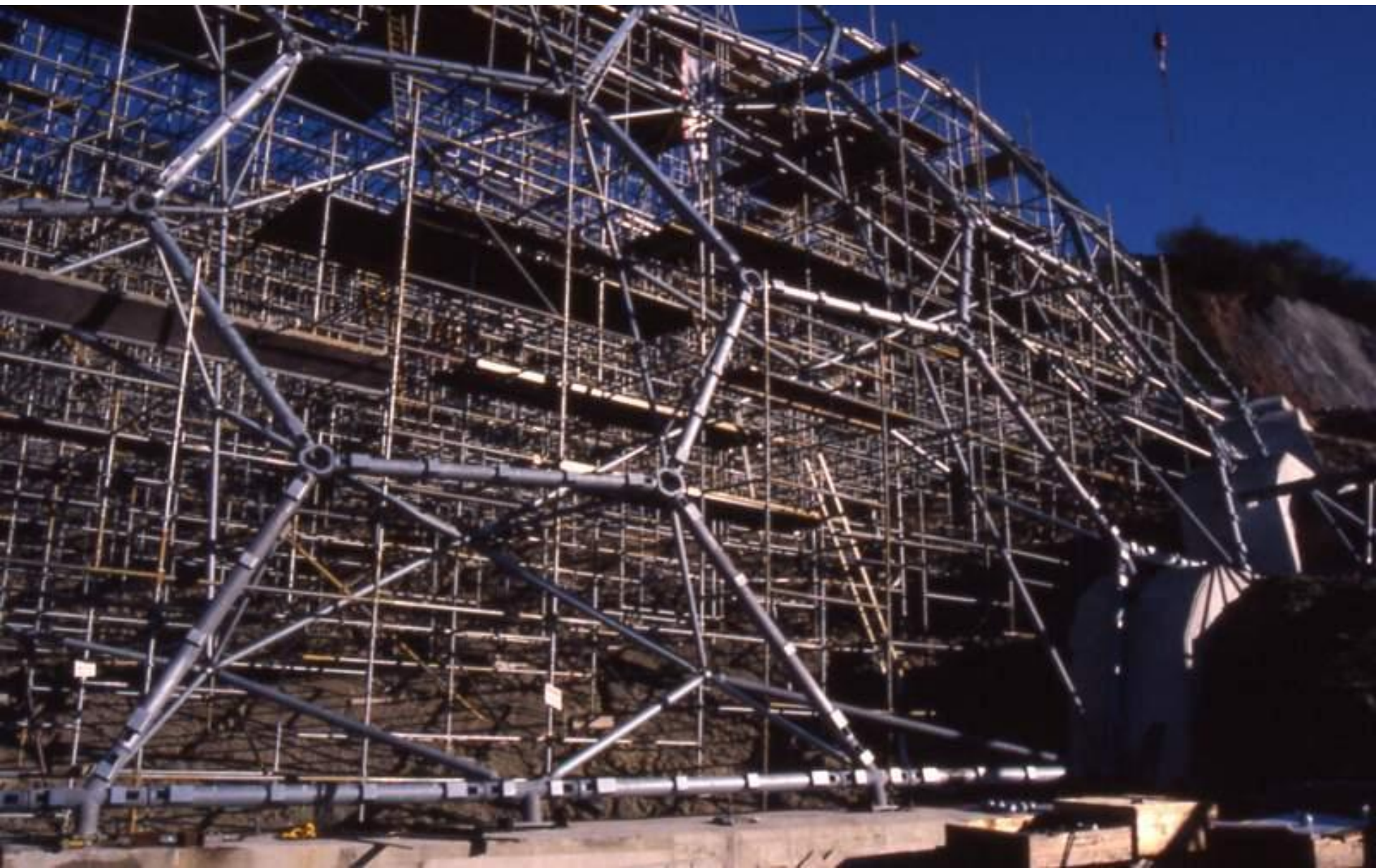
















Avalanosa tundra

1. **Spesies**

- *Salix herbacea*
- *Salix reticulata*
- *Salix arctica*
- *Salix glauca*
- *Salix repens*
- *Salix nemoralis*
- *Salix reticulata*
- *Salix arctica*
- *Salix glauca*
- *Salix repens*
- *Salix nemoralis*

2. **Struktur**

- *Salix herbacea*
- *Salix reticulata*
- *Salix arctica*
- *Salix glauca*
- *Salix repens*
- *Salix nemoralis*

3. **Adaptasi**

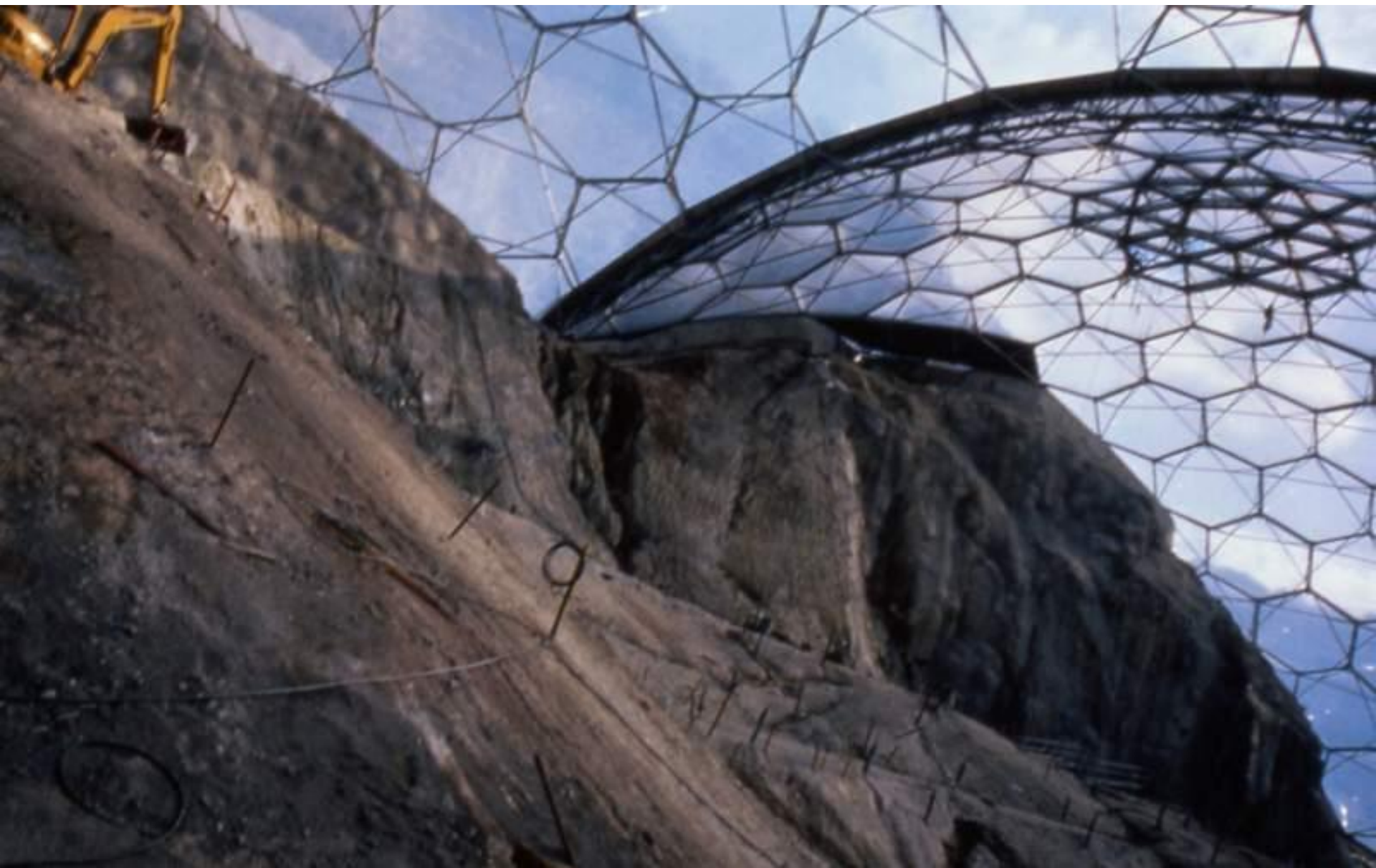
- *Salix herbacea*
- *Salix reticulata*
- *Salix arctica*
- *Salix glauca*
- *Salix repens*
- *Salix nemoralis*

4. **Reproduksi**

- *Salix herbacea*
- *Salix reticulata*
- *Salix arctica*
- *Salix glauca*
- *Salix repens*
- *Salix nemoralis*

5. **Persebaran**

- *Salix herbacea*
- *Salix reticulata*
- *Salix arctica*
- *Salix glauca*
- *Salix repens*
- *Salix nemoralis*





















Biofuels - Corn
 Maybe not so carbon neutral!
 Food, fuel and sometimes used to
 make the feedlot to raise the corn
 protein for the pig.

Amaranthaceae
 By falling, coefficients
 1. Starchy food crop
 Crops for food and fuel
 More use of biofuels
 real push-up price

Available support: crop
 financing + transport + Energy
 Finance

In the future ... potential
 of tropical surface

Tropical Biofuels

H.19

(Note: The sign contains detailed text and a diagram, but it is mostly illegible due to the image quality. It appears to have a small diagram of a person and some text at the bottom.)

Maybe not
 produced in Asia
 and Africa by
 the 18th century

Amaranth is a
 tropical
 sub-tropical
 crop



So what will it look like?

The building will be a landmark structure in the location we have established. Our architect, Crossin, has helped us to craft a beautiful, historic and exemplary fusion of architecture, technology, science and the arts that will be a unique vision.

The building will be a landmark structure in the location we have established. Our architect, Crossin, has helped us to craft a beautiful, historic and exemplary fusion of architecture, technology, science and the arts that will be a unique vision.

The building will be a landmark structure in the location we have established. Our architect, Crossin, has helped us to craft a beautiful, historic and exemplary fusion of architecture, technology, science and the arts that will be a unique vision.



We'd love to know what you think... and your ideas below!

THE EDGE

Find out more about the next evolution of Eden here



Any economic benefits?

Eden has already been an economic winner for Cornwall and the wider region. 8 million visitors, many of whom came just to see what Eden was all about, have spent millions - in fact nearly a billion.

Eden has already been an economic winner for Cornwall and the wider region. 8 million visitors, many of whom came just to see what Eden was all about, have spent millions - in fact nearly a billion.

80%

EDEN HAS ALREADY BEEN AN ECONOMIC WINNER FOR CORNWALL AND THE WIDER REGION. 8 MILLION VISITORS, MANY OF WHOM CAME JUST TO SEE WHAT EDEN WAS ALL ABOUT, HAVE SPENT MILLIONS - IN FACT NEARLY A BILLION.

2,500

Please do not touch the model









www.apexnewspix.com 03/08/07 Pic Tony Carney Eden Project-Den Challenge
Eden team members with one of the dens







Gardens for Life

Kenya, India, UK

Eden's international educational programme works with schools globally to grow gardens, food crops, ideas, conversations, partnerships and communities. Find out more in the shed.

Eden Project is
an educational charity

Your support helps us to
deliver programmes like these



































