

Vireya Rhododendrons – A
Perspective of Conservation. In
situ & ex situ
George Argent

Royal Botanic Garden, Edinburgh,
EH3 5 LR, Scotland. U.K.



R.zoelleri



R.konori



R. hellwigii



R. curviflorum



R. javanicum

Vireya seeds





R. caespitosum





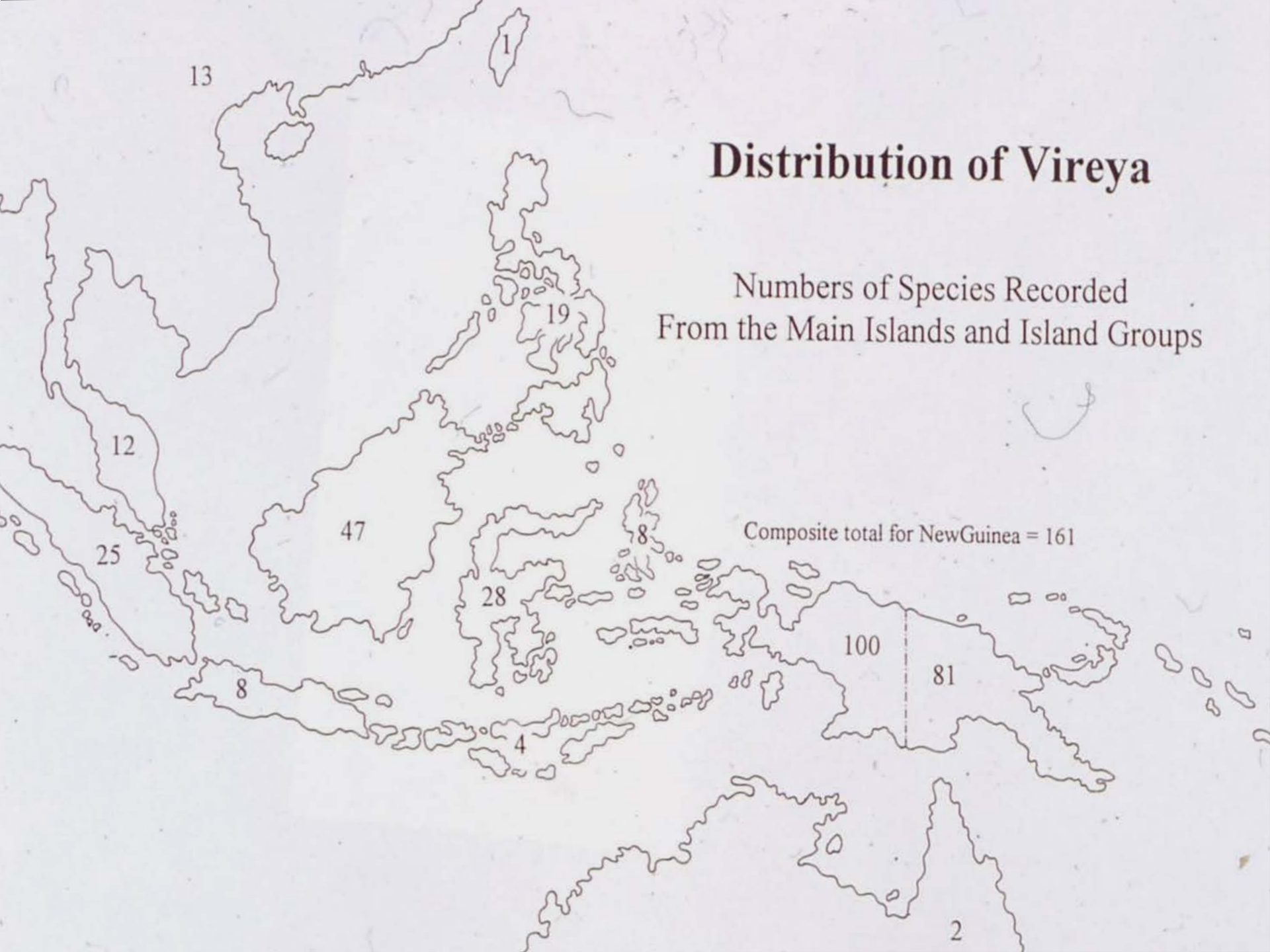
R. vanderbiltianum



R. santapau

Distribution of Vireya

Numbers of Species Recorded
From the Main Islands and Island Groups





R. meijeri



R. mendumiaae

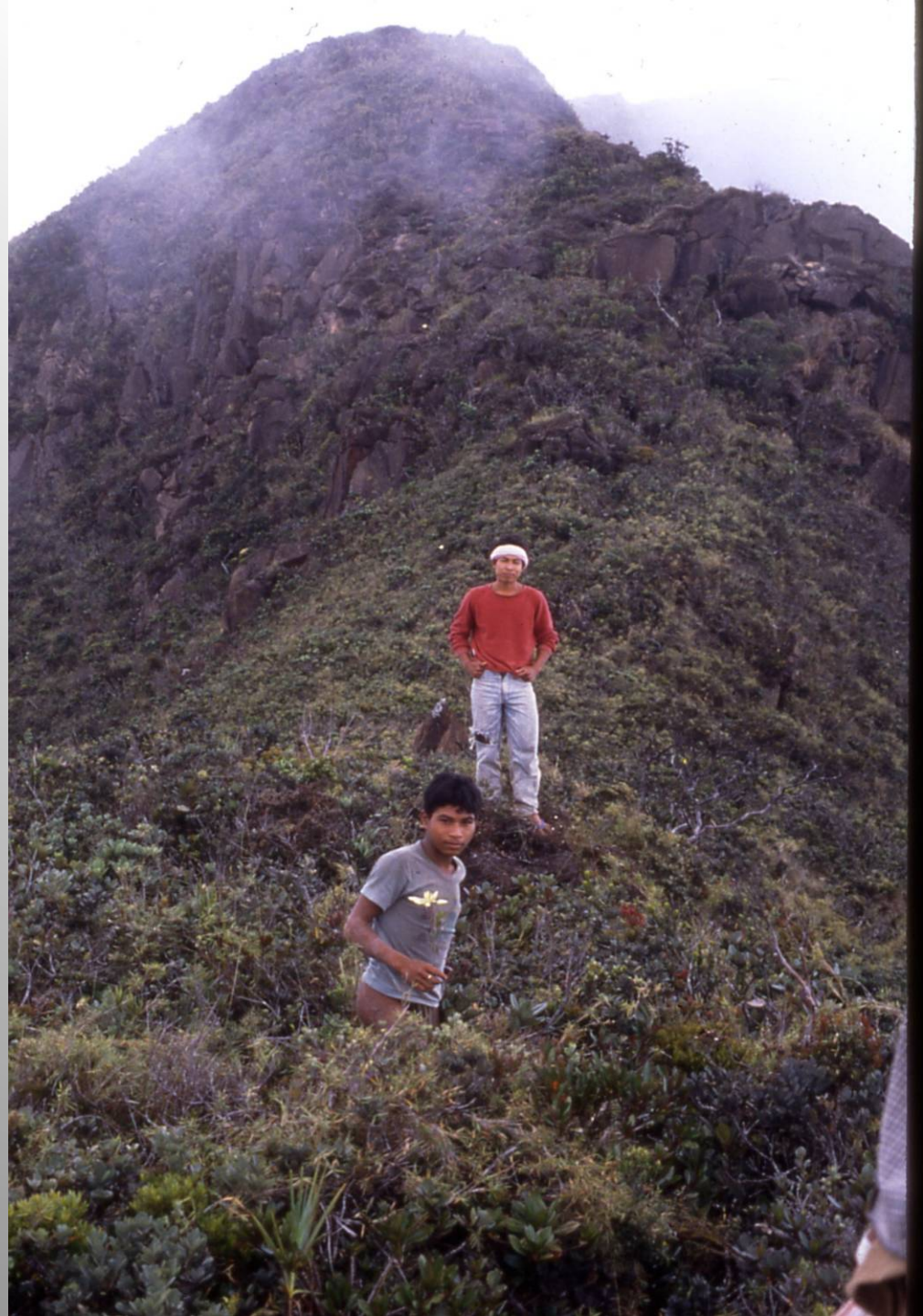


R. reynosoi

Mt. Mantalingajan, Palawan



Summit ridge Mantalingajan





R. acrophilum

R. Madulidii



R. taxifolium



View from Mt. Pulag





Mt Giluwe



Mt. Kinabalu

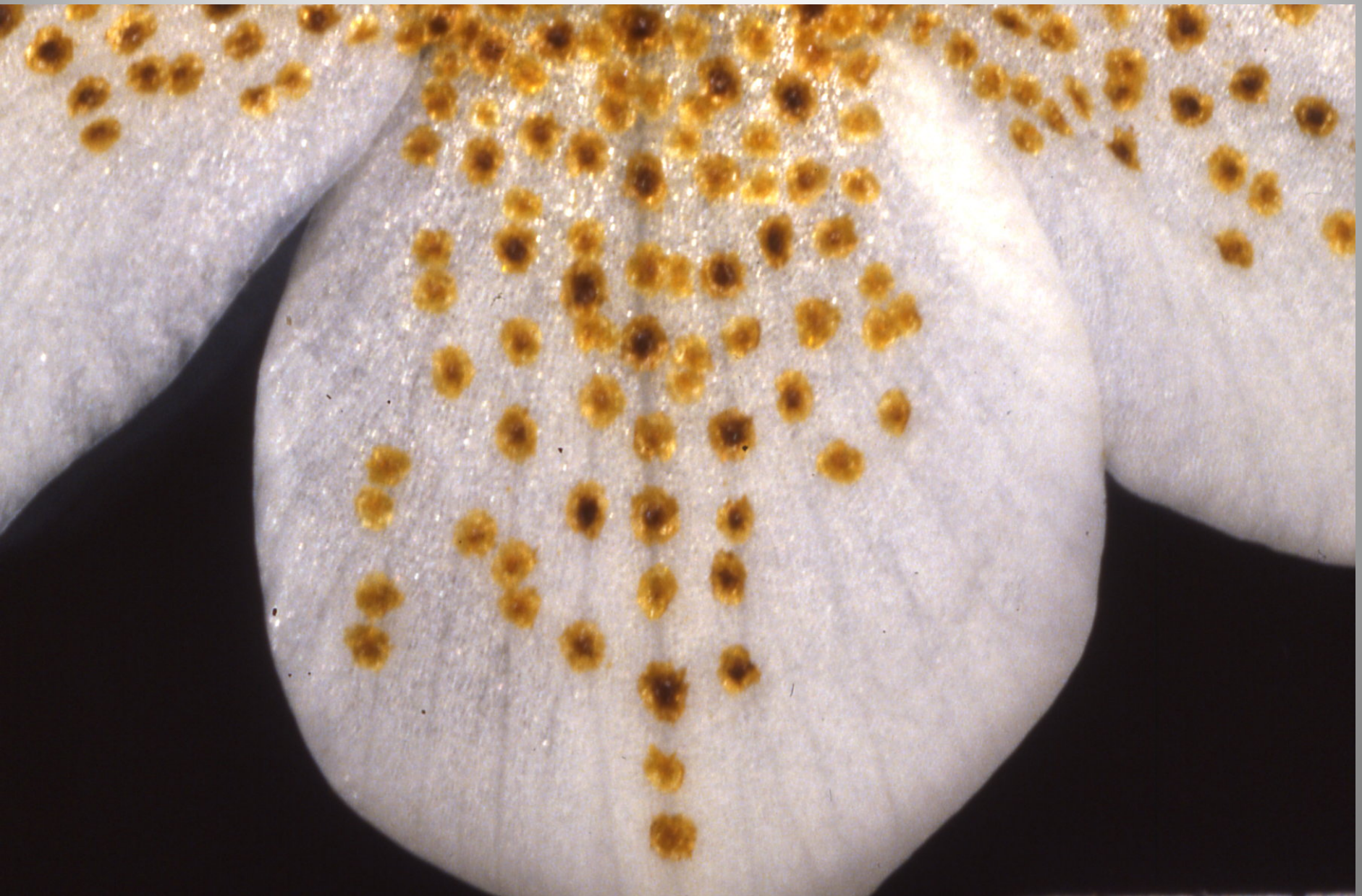


Limestone Pinnacles Mulu



R. himantodes

R. himantodes





R. salicifolium



Mt. Kinabalu



R. acuminatum



R. tuhanensis

R. malayanum





R. zollingeri



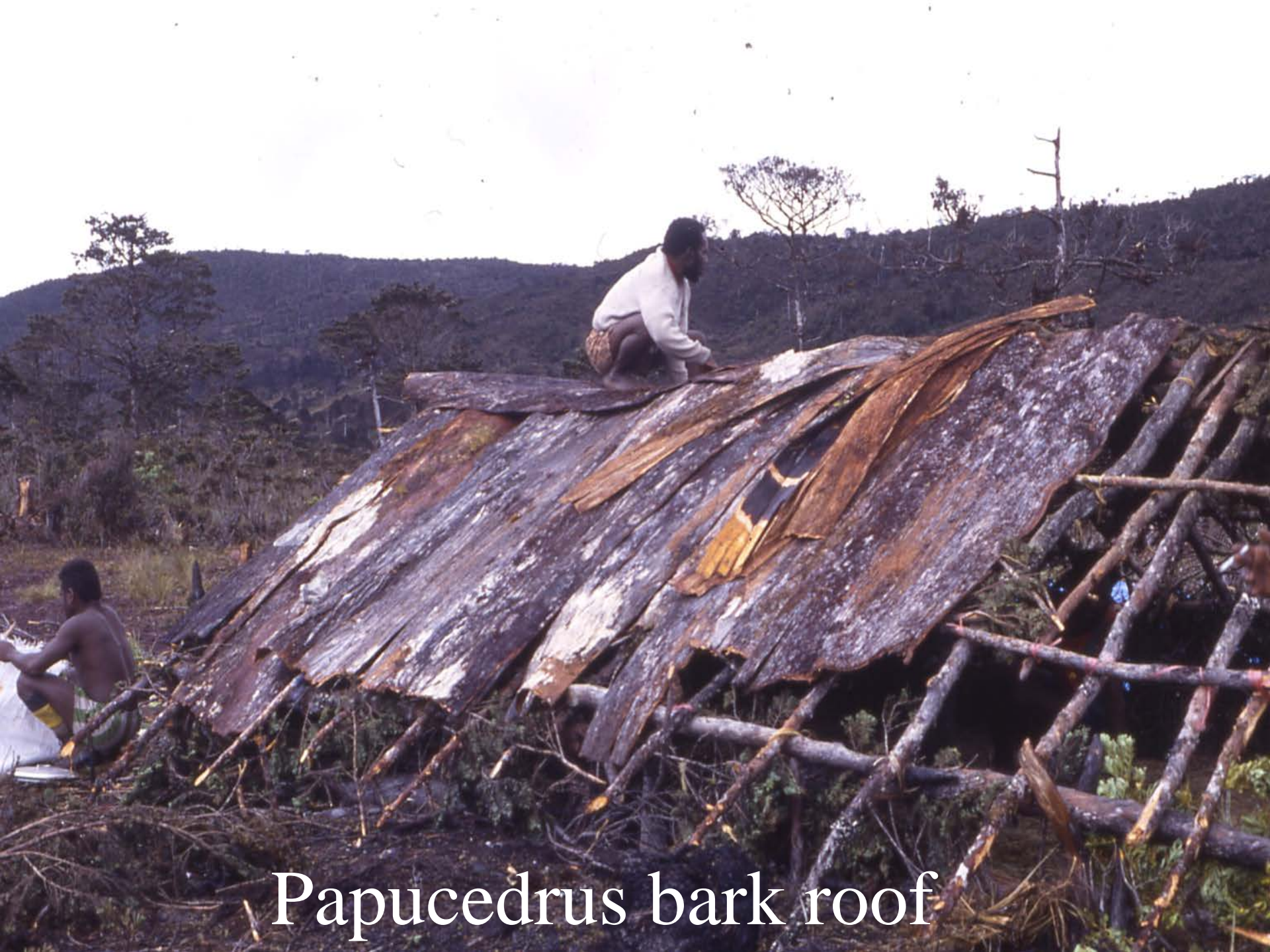
R. bagobonum

R. Javanicum ssp. *palawanense*



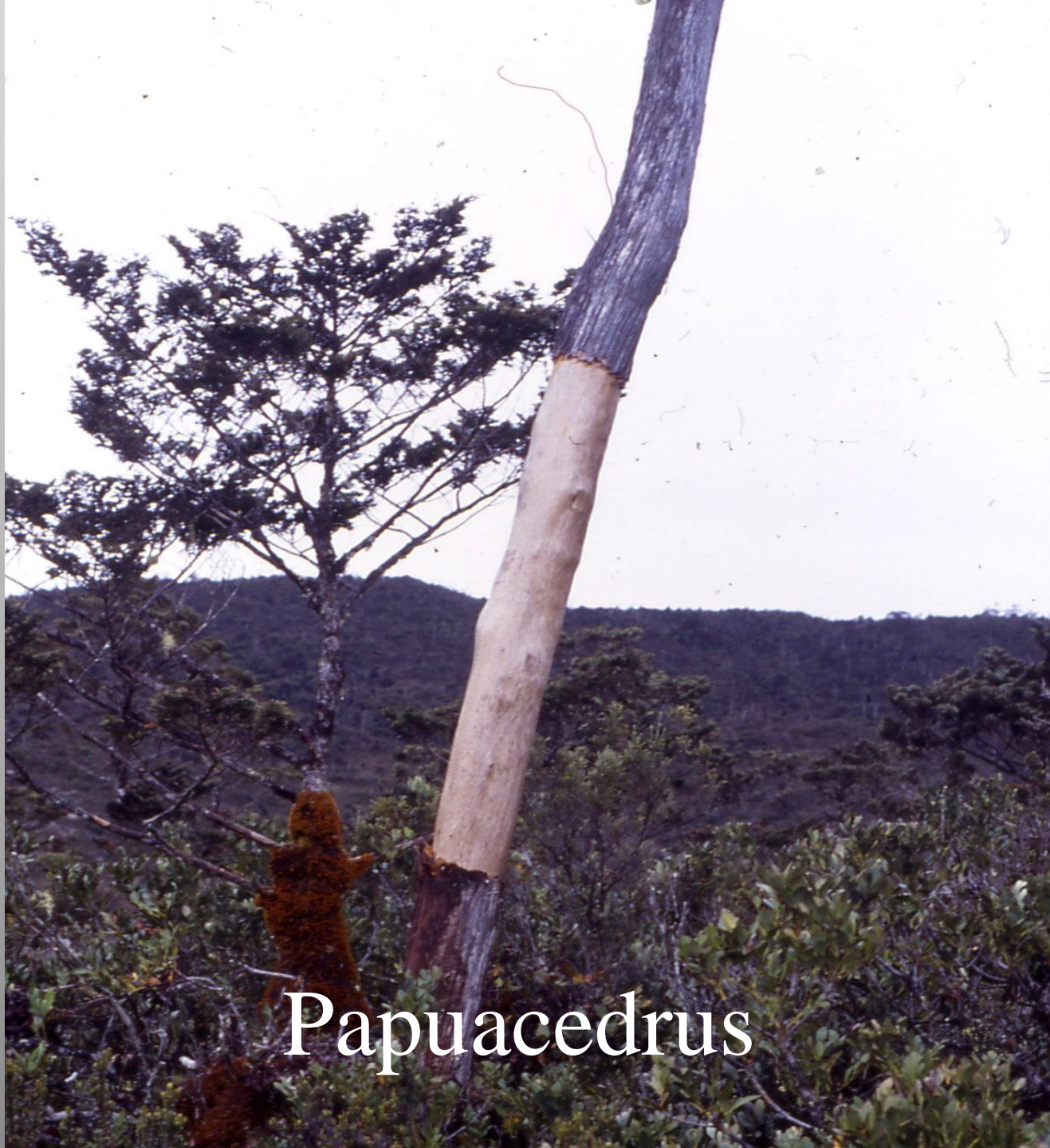






Papuedrus bark roof





Papuacedrus





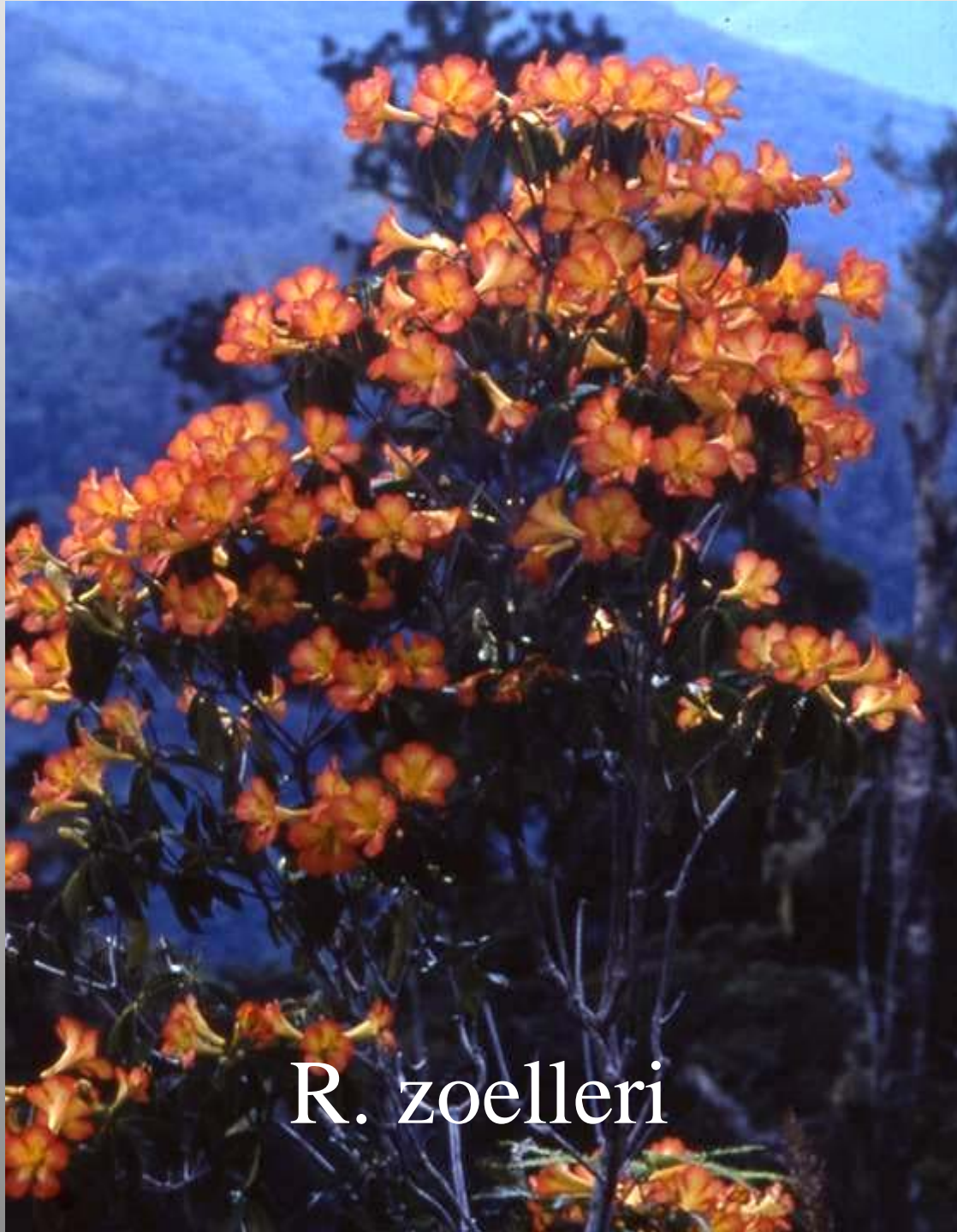
R. mendumiae



R. reynosoi

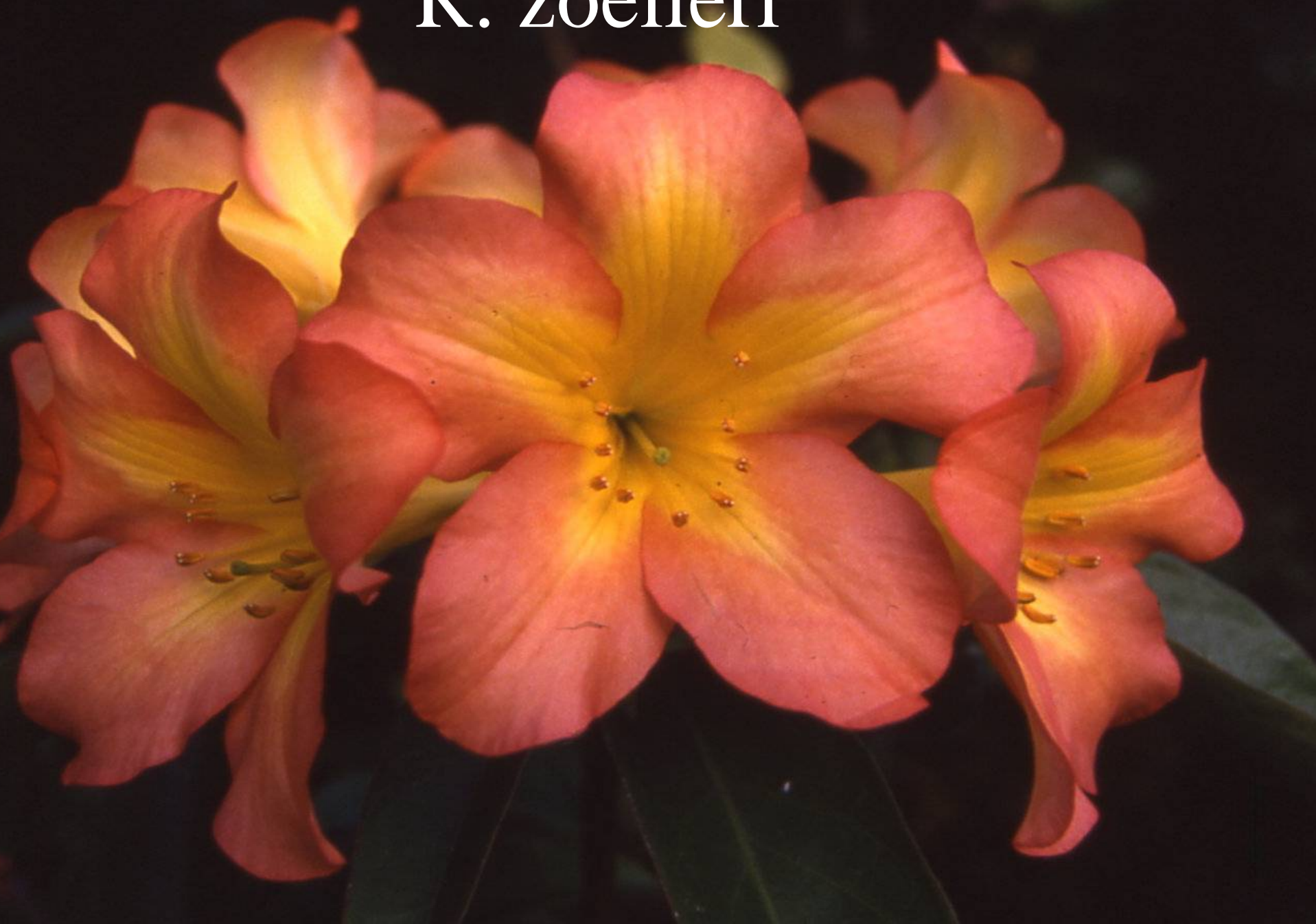
R. orbiculatum





R. zoelleri

R. zoelleri



R. leucogigas



R. Javanicum ssp. *schadenbergii*





Epiphyllum phyllanthoides

Epiphyllum phyllanthoides
var. phyllanthoides

Epiphyllum phyllanthoides

Epiphyllum phyllanthoides

Epiphyllum phyllanthoides

Epiphyllum phyllanthoides

Epiphyllum phyllanthoides
var. phyllanthoides

R. superbum





R. rhodoleucum

